



Bidirectional epithelial–mesenchymal crosstalk provides self-sustaining profibrotic signals in pulmonary fibrosis

Received for publication, June 10, 2021, and in revised form, August 6, 2021. Published, Papers in Press, August 18, 2021.
<https://doi.org/10.1016/j.jbc.2021.101096>

Liudi Yao¹, Yilu Zhou^{1,2}, Juanjuan Li¹, Leanne Wickens^{3,4,5}, Franco Conforti^{4,5}, Anna Rattu¹,
Fathima Maneesha Ibrahim¹, Aiman Alzetani^{5,6}, Ben G. Marshall^{5,6}, Sophie V. Fletcher^{5,6}, David Hancock⁷,
Tim Wallis^{5,6}, Julian Downward⁷, Rob M. Ewing^{1,2} , Luca Richeldi^{4,5,8}, Paul Skipp^{1,2,3} , Donna E. Davies^{2,4,5},
Mark G. Jones^{2,4,5,*} , and Yihua Wang^{1,2,5,*}

From the ¹Biological Sciences, Faculty of Environmental and Life Sciences, ²Institute for Life Sciences, ³Centre for Proteomic Research, Institute for Life Sciences, and ⁴Clinical and Experimental Sciences, Faculty of Medicine, University of Southampton, Southampton, United Kingdom; ⁵NIHR Southampton Biomedical Research Centre, University Hospital Southampton, Southampton, United Kingdom; ⁶University Hospital Southampton, Southampton, United Kingdom; ⁷Oncogene Biology, The Francis Crick Institute, London, United Kingdom; and ⁸Unità Operativa Complessa di Pneumologia, Università Cattolica del Sacro Cuore, Fondazione Policlinico A. Gemelli, Rome, Italy

Edited by Dennis Voelker

Idiopathic pulmonary fibrosis (IPF) is the prototypic progressive fibrotic lung disease with a median survival of 2 to 4 years. Injury to and/or dysfunction of the alveolar epithelium is strongly implicated in IPF disease initiation, but the factors that determine whether fibrosis progresses rather than normal tissue repair occurs remain poorly understood. We previously demonstrated that zinc finger E-box-binding homeobox 1–mediated epithelial–mesenchymal transition in human alveolar epithelial type II (ATII) cells augments transforming growth factor- β –induced profibrogenic responses in underlying lung fibroblasts *via* paracrine signaling. Here, we investigated bidirectional epithelial–mesenchymal crosstalk and its potential to drive fibrosis progression. RNA-Seq of lung fibroblasts exposed to conditioned media from ATII cells undergoing RAS-induced epithelial–mesenchymal transition identified many differentially expressed genes including those involved in cell migration and extracellular matrix regulation. We confirmed that paracrine signaling between RAS-activated ATII cells and fibroblasts augmented fibroblast recruitment and demonstrated that this involved a zinc finger E-box-binding homeobox 1–tissue plasminogen activator axis. In a reciprocal fashion, paracrine signaling from transforming growth factor- β –activated lung fibroblasts or IPF fibroblasts induced RAS activation in ATII cells, at least partially through the secreted protein acidic and rich in cysteine, which may signal *via* the epithelial growth factor receptor *via* epithelial growth factor–like repeats. Together, these data identify that aberrant bidirectional epithelial–mesenchymal crosstalk in IPF drives a chronic feedback loop that maintains a wound-healing phenotype and provides self-sustaining profibrotic signals.

Fibrotic diseases are a major cause of morbidity and mortality worldwide, and their prevalence is increasing with an ageing population (1). Development of effective treatments for

progressive fibrosis is considered one of the most challenging tasks in modern medicine.

Our studies focus within the lung upon fibrotic interstitial lung diseases, a diverse group of conditions that affect the space between the alveolar epithelium and the capillary endothelium to cause varying degrees of inflammation and fibrosis. Once considered rare, epidemiologic investigations have found them to be more common than previously recognized, with interstitial lung abnormalities detected in 7% of the general population (aged older than 50 years) resulting in an increase in all-cause mortality (hazard ratio = 2.7) (2). Idiopathic pulmonary fibrosis (IPF) is the prototypic chronic progressive fibrotic interstitial lung disease, affecting five million people worldwide (3). Like many fibrotic disorders, IPF is characterized by enhanced deposition and remodeling of the extracellular matrix (ECM). This leads to decreased lung compliance, disrupted gas exchange, and ultimately respiratory failure and death. Median survival from diagnosis is 2 to 4 years, and approved therapies only slow disease progression, so there is a significant unmet need.

An overexuberant wound healing response is regarded as a canonical cause of organ fibrosis (4). Abnormal wound healing may occur as a consequence of multiple stimuli, including infections, chemical exposures, and physical injuries (1, 5). Whilst injury to and/or dysfunction of the alveolar epithelium is strongly implicated in IPF disease initiation, the factors that determine whether fibrosis progresses rather than normal tissue repair occurs remain poorly understood.

In this study, we identify that aberrant bidirectional epithelial–mesenchymal crosstalk provides self-sustaining activation signals driving disease progression in pulmonary fibrosis. Building on our previous report (6), we provide evidence that alveolar epithelial type II (ATII) cells undergoing RAS-induced epithelial–mesenchymal transition (EMT) utilize a zinc finger E-box-binding homeobox 1 (ZEB1)–tissue plasminogen activator (tPA) axis to provide paracrine signals that

* For correspondence: Yihua Wang, yihua.wang@soton.ac.uk; Mark G. Jones, mark.jones@soton.ac.uk.

Epithelial–mesenchymal crosstalk in pulmonary fibrosis

augment fibroblast recruitment and activation. In reciprocal paracrine signaling, transforming growth factor- β (TGF- β)–activated fibroblasts or IPF fibroblasts (IPFFs) induce RAS activation in ATII cells, which is at least partially driven by secreted protein acidic and rich in cysteine (SPARC). These findings support the concept that aberrant bidirectional epithelial–mesenchymal crosstalk contributes to the development of a profibrogenic microenvironment in which a chronic wound healing response leads to interstitial lung fibrosis.

Results

Global transcriptomic changes in fibroblasts exposed to conditioned media from RAS-activated ATII cells identify multiple processes including cell migration

We previously reported that RAS-induced EMT in the human ATII cell line, ATII^{ER:KRASV12} (in which RAS activation can be induced by 4-hydroxytamoxifen [4-OHT]) resulted in production of paracrine factors that augmented TGF- β -induced profibrogenic responses in lung fibroblasts (6). To determine if, and how, fibroblasts responded to epithelial signals in the absence of profibrogenic TGF- β signaling, we characterized the global transcriptomic changes in MRC5 lung fibroblasts exposed to conditioned media (CM) from control or RAS-induced ATII cells by performing RNA-Seq.

Genes with a false discovery rate (FDR)–adjusted p value less than 0.05 were considered as differentially expressed genes (DEGs). In total, 966 DEGs were identified, including 491 upregulated (Table S1) and 475 downregulated (Table S2) genes. We then performed Gene Ontology (GO) enrichment analysis of the identified DEGs using PANTHER (<http://pantherdb.org/>) (7). The results were grouped into molecular function, biological process, and cellular component. Interestingly, several IPF-related pathological terms were identified, including ECM and collagen, cell migration, and response to cytokine growth factor inflammatory stimulus, which included TGF- β receptor signaling (FDR <0.05; Figs. 1A and S1; Tables S3 and S4). Of these, cell migration and collagen containing ECM were among the top ten ranked GO terms from the biological process category (Fig. 1B). These results extend our previous report (6) by demonstrating that CM from RAS-activated ATII cells regulates the expression of many genes that augment fibroblast activation and migration independent of exogenous TGF- β . Of note, under these conditions, we did not see changes in expression of *ACTA2*, encoding α -smooth muscle actin (α -SMA) (adjusted p value equals 0.289), suggesting that the fibroblasts did not adopt a myofibroblast phenotype under the conditions tested.

The effect of CM from RAS-induced ATII cells on genes controlling cell migration was further demonstrated using gene set variation analysis (GSVA) with a gene list from GO:0010763 (positive regulation of fibroblast migration); the GSVA score calculated based on this gene list was higher in MRC5 cells incubated with CM from 4-OHT-treated *versus* control ATII^{ER:KRASV12} cells ($p < 0.05$; Fig. 2A). To validate this finding on cell migration, scratch wound assays were performed using MRC5 or IPFFs treated with CM from

control or 4-OHT-activated ATII^{ER:KRASV12} cells. Twenty-four hours after the scratch wound, IPFFs treated with CM from 4-OHT-activated ATII cells almost filled all the gaps, whereas the wound in the control cells was still open ($p < 0.01$; Fig. 2B). Similar results were obtained using MRC5 lung fibroblasts (Fig. S2A). Under the same conditions, CM from RAS-activated ATII cells did not affect the cell viability in MRC5 (Fig. S2B). In addition, in a transwell migration assay, a 3.5-fold increase in migration was detected using MRC5 lung fibroblasts treated with CM from 4-OHT-activated ATII^{ER:KRASV12} cells compared with those treated with CM from control cells over a 24-h period ($p < 0.001$; Fig. 2C). Together, these results demonstrate that RAS-activated ATII cells augment fibroblast migration *via* paracrine signaling.

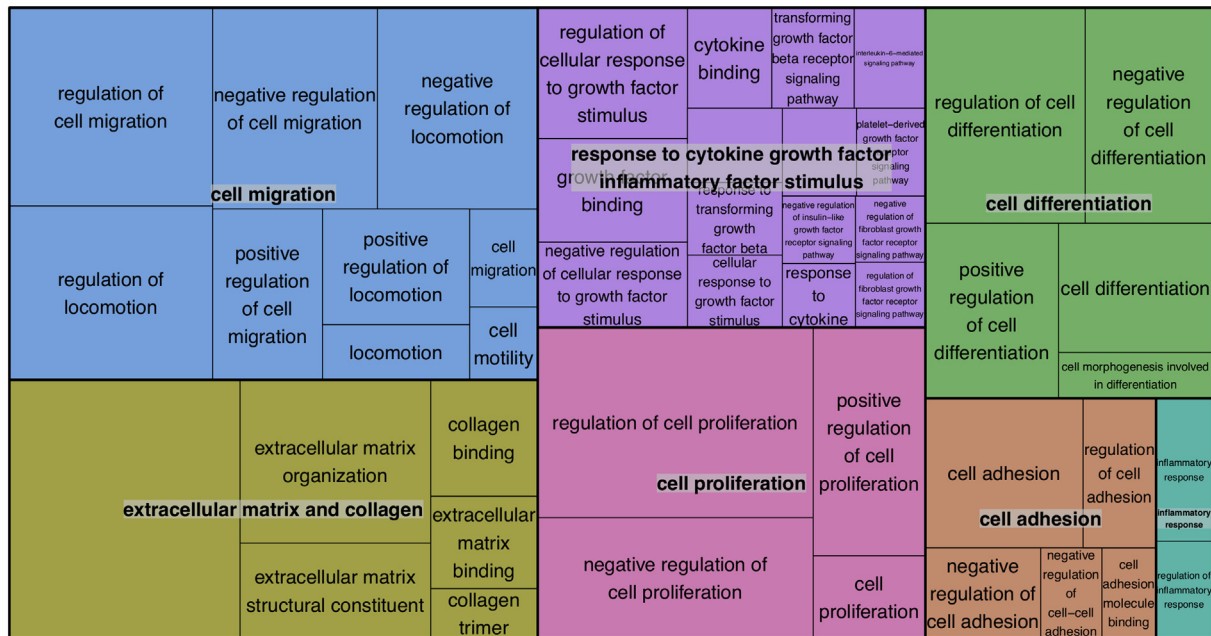
RAS-activated ATII cells augment fibroblast migration via paracrine signaling, in which ZEB1 and tPA are key regulators

As we previously demonstrated that ZEB1 and its transcriptional target, tPA (encoded by *PLAT* gene) are key regulators of epithelial–mesenchymal crosstalk (6), we hypothesized that these two proteins may also control the ability of RAS-activated ATII cells to promote migration and recruit fibroblasts by paracrine signaling. First, we depleted *ZEB1* in ATII^{ER:KRASV12} cells *via* RNAi (Fig. S3A). We found that this completely abolished the promigratory effects of CM from RAS-activated ATII cells on lung fibroblasts in both wound healing assay ($p > 0.05$; Figs. 3A and S3B) and transwell migration assay ($p > 0.05$; Fig. 3B). Next, we determined whether tPA was a key paracrine regulator of fibroblast migration. Recombinant tPA treatment significantly enhanced fibroblast migration ($p < 0.0001$; Fig. S3C). Similar to *ZEB1*, CM was collected from control or *PLAT*-depleted ATII^{ER:KRASV12} cells treated without or with 4-OHT (Fig. S3, D and E). As expected, RAS-activated ATII cells augmented fibroblast migration in both wound healing assay ($p < 0.0001$; Figs. 3A and S3F) and transwell migration assay ($p < 0.0001$; Fig. 3B), whereas under the same conditions, depletion of *PLAT* in ATII^{ER:KRASV12} cells completely abolished the promigratory effects of CM from RAS-activated ATII cells on lung fibroblasts ($p > 0.05$; Figs. 3, A and B and S3F). Taken together, these data highlight the importance of ZEB1 and tPA as key regulators of epithelial–mesenchymal crosstalk to promote fibroblast recruitment, as well as fibroblast activation, as demonstrated previously (6) (Fig. 3C).

TGF- β -activated fibroblasts or IPFFs induce RAS activation in ATII cells

Our current and previous (6) findings suggest that a ZEB1–tPA axis is involved in the paracrine signaling between RAS-activated ATII cells and fibroblasts to augment not only their recruitment but also their activation in the presence of TGF- β . To explore whether this epithelial–mesenchymal crosstalk was bidirectional, we investigated the effect of the activated fibroblasts on the alveolar epithelium. First, MRC5 lung fibroblasts were left untreated or treated with TGF- β (Fig. S4A) to induce myofibroblast differentiation, as measured

A



B

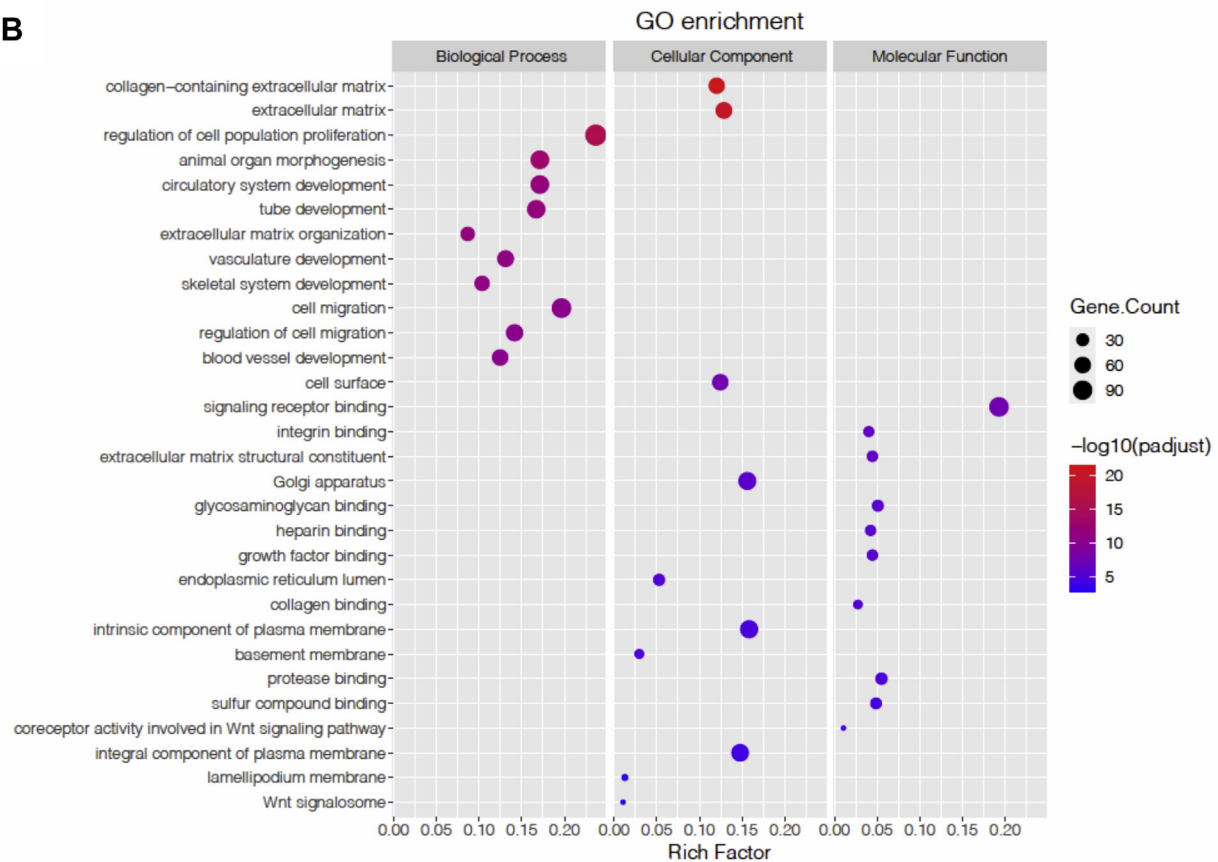


Figure 1. Global transcriptomic changes in fibroblasts exposed to CM from RAS-activated ATII cells. A, REVIKO TreeMap showing Gene Ontology (GO) analysis of upregulated DEGs in MRC5 lung fibroblasts treated with CM from 4-OHT-activated *versus* control ATII^{ER:KRASV12} cells. Common colors represent groupings based on parent GO terms, and each rectangle is proportional to the relative enrichment of the GO term compared with the whole genome. Genes with false discovery rate (FDR) <0.05 were considered as DEGs. B, scatter plot showing the top ten enriched GO terms from three categories (biological process, cellular component, and molecular function) according to rich factors. Rich factor is the percentage of DEG-enriched gene count in the given annotated GO terms. The sizes of circles represent gene counts, and the colors of circles represent the $-\log_{10}$ of the adjusted *p* values. ATII, alveolar epithelial type II; DEGs, differentially expressed genes; CM, conditioned media; 4-OHT, 4-hydroxytamoxifen.

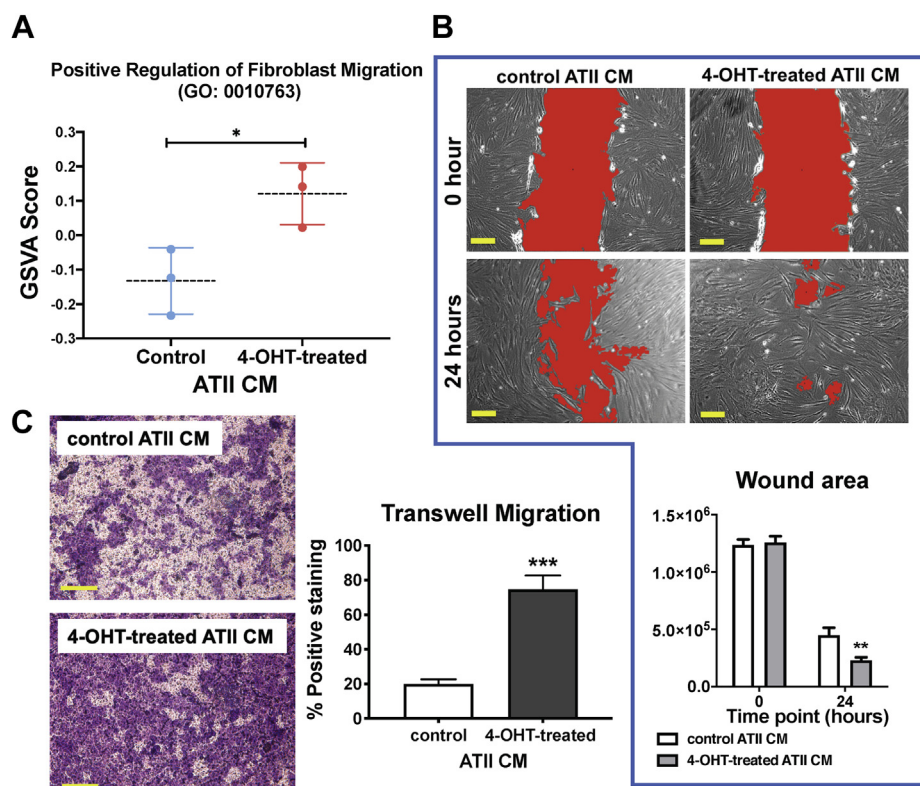


Figure 2. RAS-activated ATII cells augment fibroblast migration via paracrine signaling. *A*, graph showing GSVA scores calculated based on a gene list from GO:0010763 (positive regulation of fibroblast migration) in MRC5 cells treated with CM from control or 4-OHT-activated ATII^{ER:KRASV12} cells. Data are mean ± SD; *n* = 3. **p* < 0.05. *B*, scratch wound assay of fibroblasts treated with CM from control or 4-OHT-activated ATII^{ER:KRASV12} cells. Representative images of IPF fibroblasts with the indicated treatments at time 0 or 24 h after the scratch wound. Wounds have been artificially colored red to aid visualization. The scale bar represents 200 μm. Graph shows the areas of wounds evaluated with ImageJ, and data are mean ± SD; *n* = 3. ***p* < 0.01. *C*, transwell migration assays in MRC5 fibroblasts with indicated treatment. Cells were stained with crystal violet. The scale bar represents 100 μm. Data are mean ± SD; *n* = 3. ****p* < 0.001. ATII, alveolar epithelial type II; CM, conditioned media; GSVA, gene set variation analysis; IPF, idiopathic pulmonary fibrosis; 4-OHT, 4-hydroxytamoxifen.

using the myofibroblast marker, α-SMA. An overall increase in α-SMA protein expression manifested after 24 h of TGF-β treatment, with maximal induction being observed by Western blot at 48 h post-TGF-β treatment (Fig. S4B). To eliminate the direct effect of exogenous TGF-β in CM collected from fibroblasts on ATII cells, fibroblast cultures were placed in fresh medium without TGF-β for another 24 h before CM was harvested (Fig. S4A; group “48 h+, 24 h-”). As shown in Figure S4B, fibroblast differentiation into myofibroblasts was maintained under these conditions, evidenced by a comparable level of α-SMA protein level. We then treated ATII cells with CM from control or TGF-β-activated MRC5 cells (Fig. S4C). Western blot analysis suggested that RAS signaling was activated upon treatment with CM from TGF-β-activated fibroblasts, reflected by significant increases in phosphorylation of AKT and extracellular-regulated kinase (ERK) (Fig. S4D). Of note, TGF-β-activated fibroblast CM also increased ZEB1 expression in ATII cells (Fig. S4D). Since it has been reported that IPFFs have a higher level of autocrine TGF-β activation (8), we next compared the effects of CM from normal human lung fibroblasts (NHLFs) or IPFFs on ATII cells. We found that RAS–ZEB1 signaling was significantly higher upon treatment with CM from IPFFs, reflected by significantly higher increases in phosphorylation of AKT and ERK levels

(*p* < 0.05; Fig. 4, A and B) as well as ZEB1 (*p* < 0.01; Fig. 4C) and PLAT (tPA) expressions (*p* < 0.01; Fig. 4D). Together, these results suggest that signaling occurs between fibroblasts and ATII cells leading to RAS activation and induction of ZEB1, and that this effect is augmented by CM from fibroblasts that have been differentiated into myofibroblasts by TGF-β or by CM from IPFFs independently of exogenous TGF-β.

SPARC, a TGF-β-induced secreted protein, is highly expressed in IPF

As CM derived from TGF-β-activated fibroblasts or IPFFs induced RAS signaling in ATII cells, we next investigated which secreted factors from activated fibroblasts were responsible for this effect. By performing quantitative proteomic analysis of the CM from control or TGF-β-treated MRC5 cells, we identified 15 secreted proteins whose levels were upregulated upon TGF-β treatment (Table 1; Tables S5 and S6). Of these, SPARC was among the top candidates (Fig. 5A; Table 1), suggesting a potential regulatory role of SPARC in mesenchymal–epithelial crosstalk driven by TGF-β. This was further validated in a publicly available dataset (GSE139963) (9), in which RNA-Seq was performed in human lung fibroblasts treated with or without TGF-β. Potential

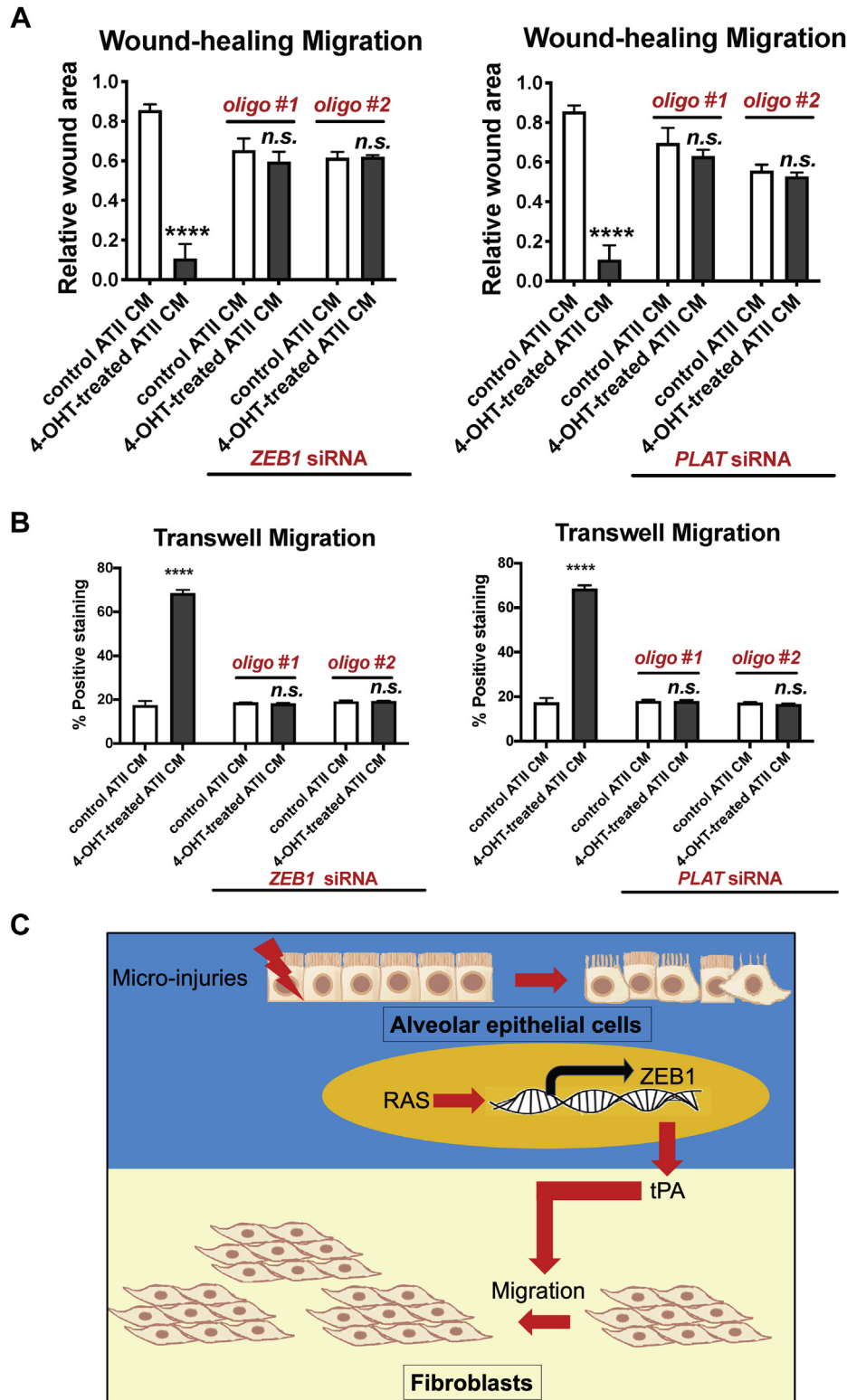


Figure 3. RAS-activated ATII cells augment fibroblast migration via paracrine signaling, in which ZEB1 and tissue plasminogen activator (tPA, encoded by gene *PLAT*) are key paracrine regulators. *A*, scratch wound assay of fibroblasts treated with CM from ATII^{ER:KRASV12} cells with indicated treatment. Graph showing the areas of wounds evaluated with ImageJ, and data are mean ± SD; *n* = 3. *****p* < 0.0001. *n.s.* (not significant) *p* > 0.05. *B*, transwell migration assays in fibroblasts treated with CM from ATII^{ER:KRASV12} cells with indicated treatment. Graph showing the percentage of positive staining of fibroblasts with indicated treatment evaluated with ImageJ, and data are mean ± SD; *n* = 3. *****p* < 0.0001. *n.s.* *p* > 0.05. *C*, diagram summarizing a key role of tPA secreted by RAS-activated ATII cells in augmenting fibroblast migration via paracrine signaling. ATII, alveolar epithelial type II; CM, conditioned media; ZEB1, zinc finger E-box-binding homeobox 1.

Epithelial–mesenchymal crosstalk in pulmonary fibrosis

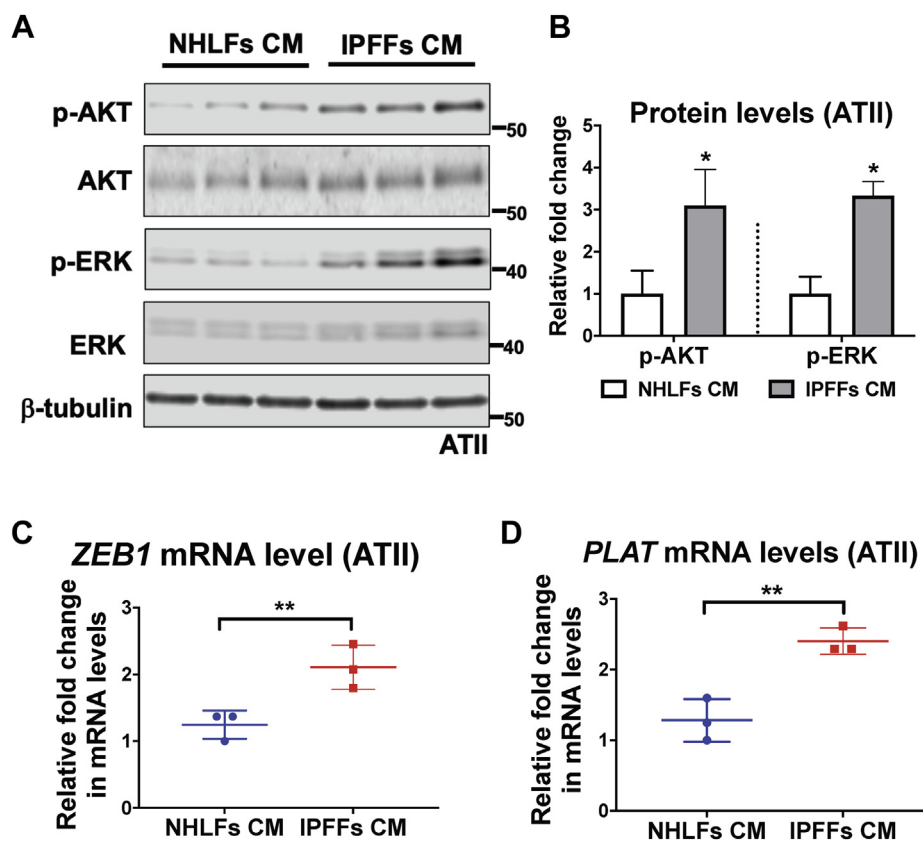


Figure 4. IPF fibroblasts induce RAS activation in ATII cells via paracrine signaling. A, protein expression of phospho-AKT (p-AKT), AKT, phospho-ERK (p-ERK), and ERK in ATII cells treated with indicated CM from NHLFs or IPFFs. β -tubulin was used as a loading control. B, graph showing protein levels of p-AKT or p-ERK in ATII cells treated with CM from NHLFs or IPFFs. Total AKT or ERK-normalized protein levels in ATII cells treated with CM from NHLFs were used to set the baseline value at unity. Data are mean \pm SD; $n = 3$. * $p < 0.05$. C and D, fold change in mRNA levels of *ZEB1* (C) or *PLAT* (D) in ATII cells treated with CM from NHLFs or IPFFs. β -actin-normalized mRNA levels in ATII cells treated with CM from NHLFs were used to set the baseline value at unity. Data are mean \pm SD; $n = 3$ samples per group. ** $p < 0.01$. ATII, alveolar epithelial type II; CM, conditioned media; ERK, extracellular-regulated kinase; IPF, idiopathic pulmonary fibrosis; IPFFs, IPF fibroblasts; NHLFs, normal human lung fibroblasts.

TGF- β -induced secreted proteins were identified by overlapping the upregulated genes with a list of secreted proteins (predicted) from Human Protein Atlas (<https://www.proteinatlas.org/humanproteome/tissue/secretome>). We

identified 116 predicted secreted proteins that were significantly elevated (FDR-adjusted p value < 0.05 and $\text{Log}_2[\text{fold change}] (\text{Log}_2[\text{fold change}]) > 1$) in TGF- β -treated lung fibroblasts compared with controls (Fig. S5; Table S7), and the

Table 1

List of secreted proteins in the CM that are upregulated upon TGF- β treatment in MRC5 cells identified by quantitative proteomic analysis and their expressions in GSE139963, GSE92592, and GSE99621

Protein	Secretome		GSE139963		GSE92592		GSE99621			
	TGF- β versus control		TGF- β versus control		IPF versus control		IPF—normal versus control		IPF—scarred versus control	
	p	Log_2FC	FDR	Log_2FC	FDR	Log_2FC	FDR	Log_2FC	FDR	Log_2FC
A2M	1.08E - 02	5.44	0.00E + 00	-3.74	1.76E - 08	1.01	2.45E - 03	0.80	2.16E - 01	0.41
IGFBP3	3.94E - 04	4.70	1.22E - 89	6.14	1.21E - 04	1.01	6.50E - 01	0.20	7.33E - 01	0.17
SERPINE2	1.84E - 03	4.11	0.00E + 00	3.85	1.26E - 15	2.37	6.26E - 05	1.53	2.59E - 04	1.49
PXDN	1.29E - 04	3.51	5.92E - 235	1.63	8.00E - 05	0.77	1.24E - 01	0.40	1.26E - 03	0.77
PGS1	1.29E - 03	2.06	8.44E - 04	-0.32	4.85E - 01	-0.08	7.74E - 02	-0.42	2.16E - 02	-0.55
THBS1	2.69E - 02	1.98	0.00E + 00	2.02	4.37E - 02	1.01	8.57E - 01	-0.12	8.95E - 01	-0.10
SPARC	4.75E - 02	1.80	0.00E + 00	1.76	1.37E - 04	0.87	4.58E - 03	0.89	2.86E - 04	1.15
APOA1-AS	2.43E - 02	1.79	2.02E - 01	-0.37	9.27E - 08	-1.54	5.36E - 07	-2.51	1.70E - 05	-2.31
COL4A2	2.06E - 02	1.47	0.00E + 00	2.98	1.25E - 04	0.91	8.00E - 01	0.14	2.54E - 01	0.49
TGFBI	1.20E - 03	1.41	1.17E - 221	1.76	5.91E - 07	0.90	4.28E - 03	0.90	2.50E - 03	0.99
MMP2	3.99E - 02	1.11	9.86E + 108	1.16	9.10E - 18	2.04	1.84E - 13	1.32	3.05E - 13	1.38
FN1	1.14E - 03	1.00	0.00E + 00	1.76	5.86E - 02	0.52	2.56E - 07	1.04	3.33E - 09	1.23
IGFBP7	9.63E - 04	0.66	3.29E - 99	1.74	7.19E - 09	0.92	6.31E - 16	1.42	8.76E - 20	1.66
COL12A1	4.19E - 02	0.51	6.97E - 01	-0.04	1.57E - 02	0.51	2.63E - 01	0.37	3.94E - 01	0.32
CYCS	1.77E - 03	0.40	6.29E - 10	0.52	2.62E - 01	0.15	8.97E - 01	0.05	8.84E - 01	0.06

Abbreviation: FC, fold change.

Numbers in bold mean p values less than 0.05 and are statistically significant.

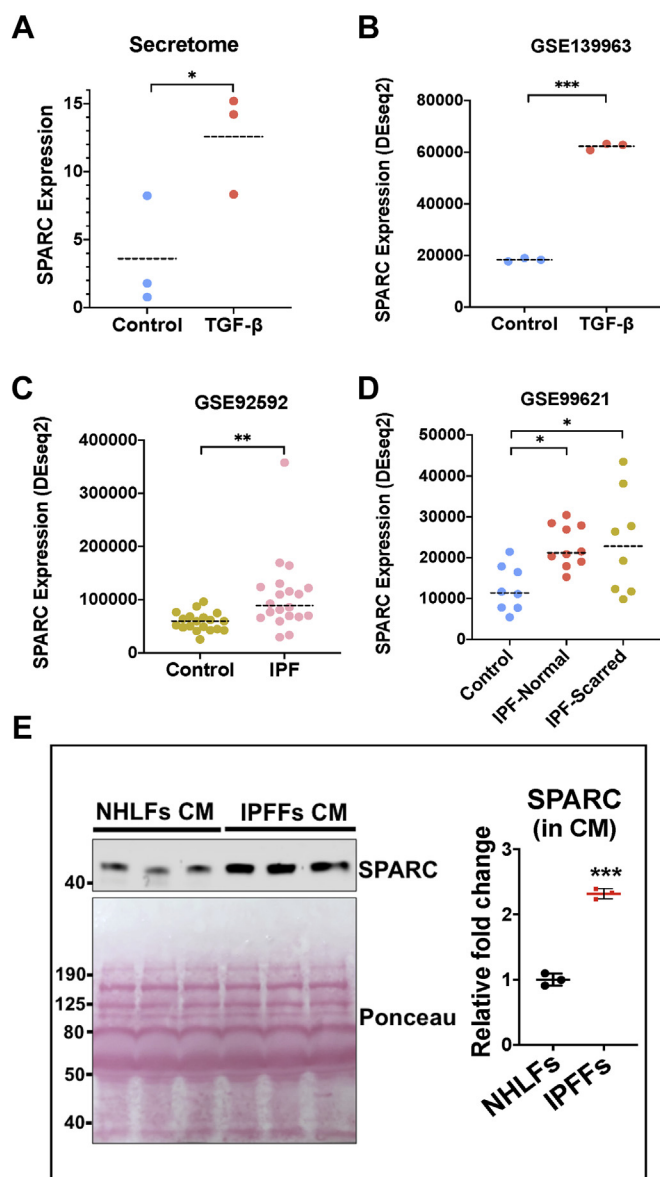


Figure 5. SPARC, a TGF- β -induced secreted protein, is highly expressed in IPF. *A*, quantitative secretome analysis identifies an increased level of SPARC in the CM from TGF- β -treated MRC5 cells. Data are mean \pm SD; $n = 3$. * $p < 0.05$. *B*, SPARC expression in human lung fibroblasts treated with or without TGF- β (GSE139963). *** $p < 0.001$. *C*, SPARC expression in lung tissues from healthy controls and IPF patients (GSE92592). ** $p < 0.01$. *D*, SPARC expression in lung tissues from healthy controls and IPF samples with macroscopically normal-appearing (IPF-normal) or scarred (IPF-scarred) (GSE99621). * $p < 0.05$. *E*, protein expression of SPARC in CM from NHLFs or IPFFs. Ponceau 5 staining showing total protein levels. Graph showing SPARC protein levels in CM from NHLFs or IPFFs. Data are mean \pm SD; $n = 3$. *** $p < 0.001$. CM, conditioned media; IPF, idiopathic pulmonary fibrosis; IPFFs, IPF fibroblasts; NHLFs, normal human lung fibroblast; SPARC, secreted protein acidic and rich in cysteine; TGF- β , transforming growth factor- β .

expression of SPARC was increased by over 3-fold ($p < 0.001$) (Fig. 5B; Table 1; Fig. S5B; Table S7). The importance of SPARC in IPF pathogenesis was further confirmed in other datasets. In dataset GSE92592 (10), SPARC levels are increased in IPF tissues compared with control lungs ($p < 0.01$; Fig. 5C; Table 1), consistent with our recent report (11). Further analysis of GSE99621 (12) showed that SPARC expression is increased not only in scarred but also in those

macroscopically unaffected (normal-appearing) regions of IPF lung ($p < 0.05$; Fig. 5D; Table 1). In addition, we confirmed a significantly enhanced secretion of SPARC in CM from IPFFs versus NHLFs by Western blotting ($p < 0.001$; Fig. 5E). Therefore, these data suggested that SPARC is induced as an early response to fibroblast activation and that it may be associated with IPF disease progression.

SPARC is a key fibroblast-derived paracrine regulator of RAS activation in ATII cells

We recently reported that paracrine SPARC signaling from IPFFs dysregulates alveolar epithelial barrier integrity (11). We therefore hypothesized that SPARC might also mediate RAS activation in ATII cells during fibroblast–epithelial crosstalk. To test this hypothesis, ATII cells were exposed to CM harvested from control or SPARC-depleted NHLFs treated without or with TGF- β (Fig. S6A). As expected, we detected enhanced expression (Fig. S6B) and secretion (Fig. S6C) of SPARC from TGF- β -activated NHLFs compared with controls, and this was abolished using RNAi. When the CM was applied to ATII cells, CM from TGF- β -activated fibroblasts induced RAS activation, as evidenced by increases of phosphorylation in both AKT and ERK, whereas depletion of SPARC completely abolished the effects of CM from TGF- β -activated fibroblasts on ATII cells (Fig. S6C). We then compared CM from IPFFs: consistent with our previous results, an increased SPARC secretion was detected in CM from IPFFs versus NHLFs (Fig. S6D). Furthermore, while RAS signaling in ATII cells was activated by treatment with CM from IPFFs, these effects were completely abolished upon SPARC depletion in IPFFs (Fig. 6A; Fig. S6D), as evidenced by decreased phosphorylation of AKT and ERK levels (Fig. 6B; Fig. S6D). Furthermore, human recombinant SPARC treatment alone was sufficient to induce epithelial growth factor receptor (EGFR) activation in ATII cells, demonstrated by increased phosphorylation levels of EGFR and its downstream AKT and ERK phosphorylation levels (Fig. 6C). EGFR activation was accompanied by a significant increase in mRNA expression of *ZEB1* (Fig. 6C) and a reduction in *CDH1* (E-cadherin) (Fig. S6E). Therefore, our results strongly suggest that SPARC is a critical paracrine regulator from activated lung fibroblasts that induces RAS activation in ATII cells (Fig. 6D).

Discussion

IPF is a chronic progressive lung disease with limited therapeutic options (1, 13). Abnormal wound healing responses appear to make major contributions to the scarring process, but the underlying pathological mechanisms are unclear. Similar to studies in kidney fibrosis (14), our findings support the concept that aberrant epithelial–mesenchymal crosstalk contributes to the development of interstitial lung fibrosis. Our studies are consistent with the establishment of a bidirectional profibrogenic positive feedback loop, which maintains a chronic wound environment involving activated epithelial cells and fibroblasts that drive fibrosis progression rather than wound resolution (Fig. 7).

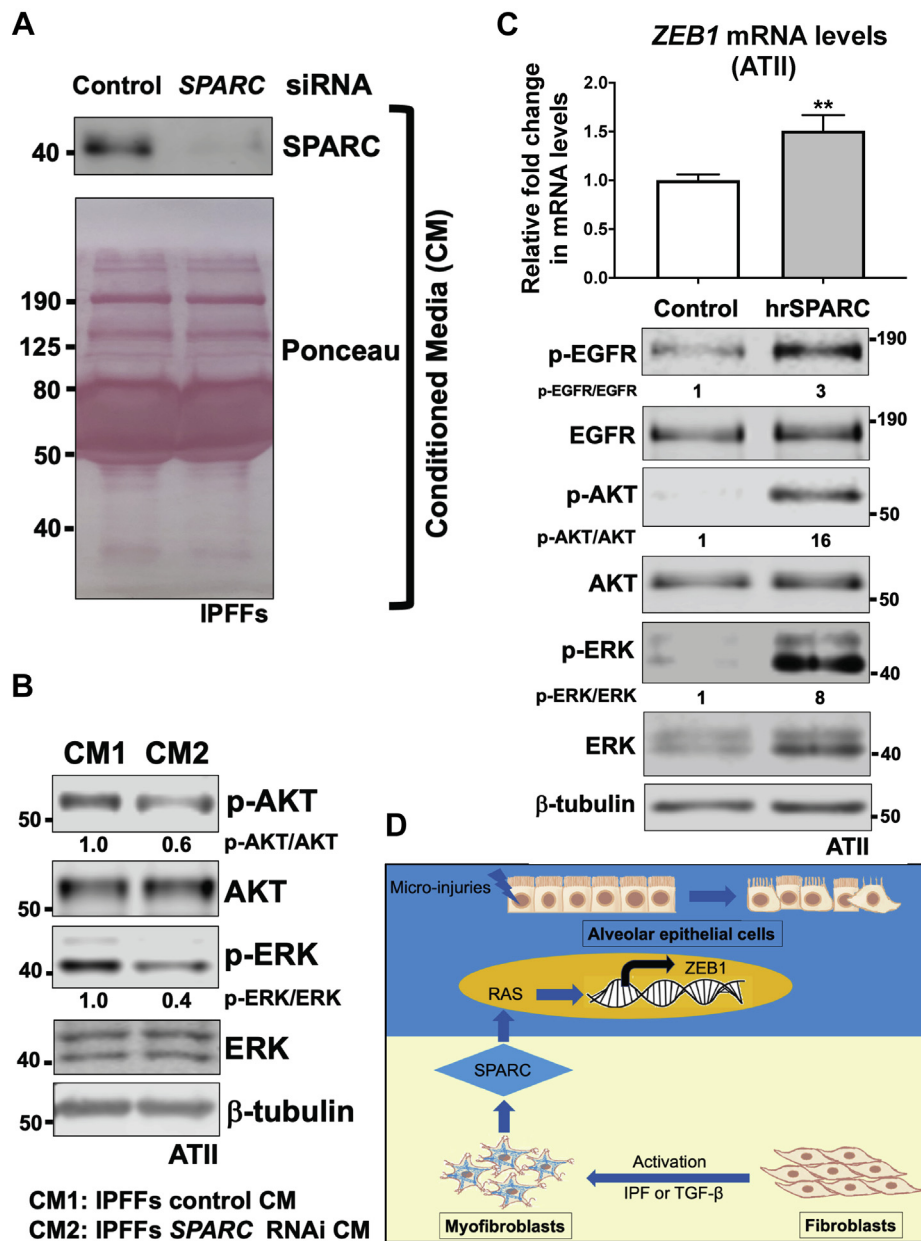


Figure 6. SPARC is a key fibroblast-derived paracrine regulator of RAS activation in ATII cells. *A*, protein expression of SPARC in CM from IPFFs with indicated treatment. Ponceau S staining showing total protein levels. *B*, protein expression of phospho-AKT (p-AKT), AKT, phospho-ERK (p-ERK), and ERK in ATII cells treated with CM from IPFFs with indicated treatment. β -tubulin was used as a loading control. Total AKT or ERK-normalized protein levels in ATII cells treated with CM from control IPFFs were used to set the baseline value at unity. *C*, protein expression of phospho-EGFR (p-EGFR), EGFR, p-AKT, AKT, p-ERK, and ERK in ATII cells treated with or without human recombinant SPARC (hrSPARC). β -tubulin was used as a loading control. Total EGFR, AKT, or ERK-normalized protein levels in control cells were used to set the baseline value at unity. Fold change in mRNA levels of *ZEB1* in ATII cells treated with or without hrSPARC. β -actin-normalized mRNA levels in control cells were used to set the baseline value at unity. Data are mean \pm SD; $n = 3$ samples per group. $**p < 0.01$. *D*, diagram summarizing SPARC as a key fibroblast-derived paracrine regulator of RAS activation in ATII cells. ATII, alveolar epithelial type II; CM, conditioned media; EGFR, epithelial growth factor receptor; ERK, extracellular-regulated kinase; IPFFs, IPF fibroblasts; SPARC, secreted protein acidic and rich in cysteine; *ZEB1*, zinc finger E-box-binding homeobox 1.

Epithelial cells undergo EMT in response to injury, allowing them to adopt a repair phenotype, which involves signaling to other cell types including inflammatory cells and resident mesenchymal cells. We previously reported that ATII cells undergoing RAS-induced EMT secrete tPA to augment TGF- β -induced myfibroblast differentiation and that *ZEB1* is a key regulator of this paracrine signaling (6). To investigate further whether fibroblasts can respond to epithelial-derived

signals in the absence of TGF- β , we used RNA-Seq to study the global transcriptomic changes in lung fibroblasts exposed to CM from ATII cells undergoing RAS-induced EMT. Using this unbiased approach, several potential mechanisms of relevance to IPF pathology were identified, including ECM and collagen, cell migration, cytokine binding, and inflammatory response, which included changes in expression of genes associated with TGF- β receptor signaling pathways. While we

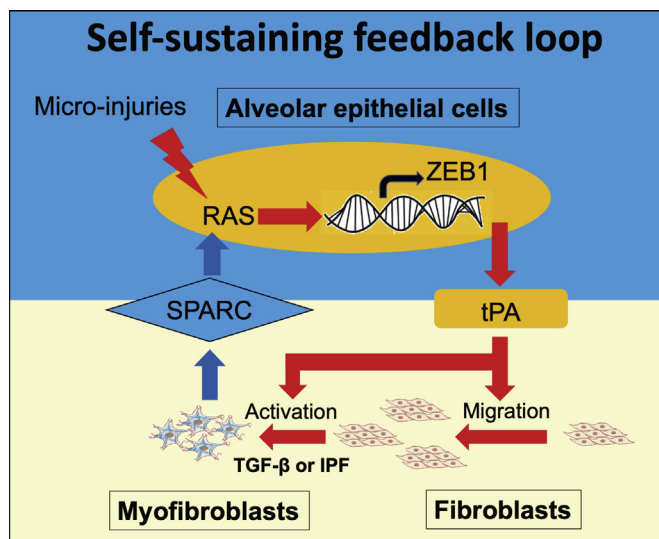


Figure 7. Diagram summarizing a critical role of bidirectional epithelial–mesenchymal crosstalk in pulmonary fibrosis (details provided in Discussion section).

observed upregulation of ECM and collagen genes including *COL3A1*, *COL4A6*, *COL14A1*, and *COL18A1* in the transcriptomic dataset, we did not observe changes in expression of either *COL1A1*, the major interstitial collagen produced in response to TGF- β stimulation, or *ACTA2*, which encodes alpha-smooth muscle actin, a marker of myofibroblast differentiation (Table S1; GSE163908). This suggests that the magnitude of TGF- β receptor signaling caused by the epithelial-derived CM was insufficient to drive differentiation of the fibroblasts into myofibroblasts. These findings are consistent with our previous studies (6) where exogenous TGF- β was required to drive myofibroblast differentiation. However, our observation of upregulation of genes associated with TGF- β receptor signaling and increased expression of many profibrotic genes in fibroblasts following exposure to CM from epithelial cells undergoing RAS-induced EMT may help explain why the CM augmented the effects of exogenous TGF- β that we observed previously (6).

Building on the strong gene expression signature for cell migration, we confirmed induction of a migratory phenotype in fibroblasts exposed to epithelial CM and demonstrated that this involved a ZEB1–tPA signaling axis, similar to that required for augmentation of TGF- β -induced myofibroblast differentiation (6). Fibroblasts from pulmonary fibrosis have altered pathological properties (15) including enhanced migration compared with fibroblasts from control lungs (16, 17). In our studies, we found that CM produced by ATII cells undergoing RAS-induced EMT markedly induced fibroblast migration and recruitment. The importance of the ZEB1–tPA axis in this process was then confirmed, with their silencing abolishing the promigratory effects of CM from RAS-activated ATII cells on lung fibroblasts. We previously identified that ZEB1 is expressed in epithelial cells of thickened alveolar septae where ECM deposition is evident (6). This suggests that ZEB1 is induced as an early response to alveolar epithelial injury and that, by regulating tPA expression, ZEB1

may promote fibroblast recruitment and thereby increase their numbers in the wound site. Consistent with our findings, it has been reported that neutralizing antibodies against tPA inhibit fibroblast migration (18). Mechanistically, tPA has direct cellular effects by virtue of its ability to bind to the low-density lipoprotein receptor–related protein-1, triggering low-density lipoprotein receptor–related protein-1 tyrosine phosphorylation and recruitment of β 1-integrin signaling involving integrin-linked kinase (19, 20).

While the activation of the ZEB–tPA axis may be a normal physiological response to injury, deregulation of this axis may sensitize the underlying fibroblasts to drive a pathological profibrotic response (21). Consistent with this concept, in kidney studies, microinjuries on renal epithelium have been proposed to create a profibrotic microenvironment *via* TGF- β or connective tissue growth factor (14, 22), promoting the aggregation of myofibroblasts, and in return, myofibroblasts may enhance the apoptosis of epithelial cells by secreting reactive oxygen species (23, 24) or angiotensin II (25, 26), so generating self-sustained pathological feedbacks. We used CM harvested from TGF- β -activated fibroblasts or IPFFs and found that both enhanced RAS activation and induction of ZEB1 in ATII cells *via* paracrine signaling. Moreover, we found that CM from IPFFs induced significantly more RAS activation and ZEB1 expression than normal fibroblasts in the absence of exogenous TGF- β , pointing to a pathological mechanism within the IPFF population. This finding may be explained by a previous report that autocrine TGF- β signaling is enhanced in IPFFs (8). Taken together, these data suggest that bidirectional epithelial–mesenchymal crosstalk may become dysregulated in IPF leading to fibrosis progression rather than wound resolution.

Using proteomics and bioinformatics, we were able to identify SPARC, secreted by TGF- β -activated fibroblasts, as a key paracrine regulator of RAS activation in ATII cells. SPARC, a cysteine-rich acidic matrix-associated protein, containing three epithelial growth factor–like repeats, is required for the collagen in bone to become calcified but is also involved in ECM synthesis and promotion of changes to cell shape (27–34). Consistent with our recent findings (11), our analysis based on publicly available transcriptome datasets indicate that SPARC expression is increased not only in scarred regions but also in macroscopically unaffected (normal-appearing) regions of IPF lung tissue (10, 12). This suggests that SPARC is induced as an early response to fibroblast activation. We found that while SPARC expression can be induced by TGF- β in normal lung fibroblasts, it is aberrantly expressed by IPFFs and that it acts *via* a paracrine mechanism to mediate RAS activation in ATII cells. SPARC has been shown by several studies to be able to regulate ERK signaling (35–37), although the upstream mechanism remains to be elucidated. In this study, our results demonstrated that SPARC alone is sufficient to induce EGFR activation in ATII cells, suggesting that SPARC might signal *via* the EGFR similar to tenascin C (38–40) *via* their epithelial growth factor–like repeats (41). Together, we have provided strong evidence suggesting that in both TGF- β -activated healthy lung

Epithelial–mesenchymal crosstalk in pulmonary fibrosis

fibroblasts and IPFFs, paracrine SPARC signaling dysregulates alveolar epithelial barrier integrity (11) and activates EGFR/RAS signaling in ATII cells to maintain a chronic wound-healing phenotype.

In summary, we identify a mechanism whereby bidirectional epithelial–mesenchymal crosstalk results in self-sustaining activation of wound healing responses. This involves a ZEB1–tPA axis in ATII cells, which contributes to paracrine signaling that supports recruitment of fibroblasts and augments TGF- β -induced fibrotic responses; in turn, the aberrant behavior of IPFFs (or normal fibroblasts activated by high levels of TGF- β) promotes persistent alveolar epithelial activation *via* paracrine mediators including SPARC, which prevents resolution of normal epithelial repair responses and restoration of tissue homeostasis. Such a chronic wound environment may drive disease progression in pulmonary fibrosis (Fig. 7).

Experimental procedures

Lung tissue sampling

All human lung tissue samples for primary cell culture were approved by the Southampton and South West Hampshire and the Mid and South Buckinghamshire Local Research Ethics Committees, and all subjects gave written informed consent. The study abided by the Declaration of Helsinki principles. Clinically indicated IPF lung biopsy tissue samples and nonfibrotic control tissue samples (macroscopically normal lung sampled remote from a cancer site) were assessed as surplus to clinical diagnostic requirements. All IPF samples were from patients subsequently receiving a multidisciplinary diagnosis of IPF according to international consensus guidelines (42).

Cell culture, reagents, and transfections

Primary parenchymal lung fibroblast cultures were established from IPF or control lung tissues as described previously (6, 43–45). MRC5 lung fibroblasts were obtained from the European Collection of Authenticated Cell Cultures. Fibroblasts were cultured in Dulbecco's modified Eagle's medium supplemented with 10% fetal bovine serum, 50 units/ml penicillin, 50 μ g/ml streptomycin, 2 mM L-glutamine, 1 mM sodium pyruvate, and 1 \times nonessential amino acids (all from Life Technologies). ATII^{ER:KRASV12} cells (6, 45–47) were cultured in DCCM-1 (Biological Industries, Ltd) supplemented with 10% newborn calf serum (Life Technologies), 1% penicillin, 1% streptomycin, and 1% L-glutamine (all from Life Technologies). All cells were kept at 37 °C and 5% CO₂. No *mycoplasma* contamination was detected in the cell lines used.

siRNA oligos against ZEB1 (MU-006564-02-0002, Set of four Upgrade) and PLAT (tPA) (MU-005999-01-0002, Set of four Upgrade) and SPARC (L-003710-00-0005; M-003710-02-0005) were purchased from Dharmacon. Sequences are available from Dharmacon or on request. As a negative control, we used siGENOME RISC-Free siRNA (Dharmacon; D-001220–01). ATII^{ER:KRASV12} cells were transfected with the indicated siRNA oligos at a final concentration of 35 nM using DharmaFECT 2

reagent (Dharmacon). Fibroblasts were transfected with the indicated siRNA oligos at the same concentration using Lipofectamine RNAiMAX reagent (Invitrogen). Recombinant tPA protein was from Bio-Techne, and human recombinant SPARC was from Peprotech.

RNA isolation, library construction, and sequencing

To identify global transcriptomic changes in fibroblasts exposed to CM from RAS-activated ATII cells, RNA-Seq was performed in MRC5 cells treated with either CM from control or 4-OHT-activated ATII^{ER:KRASV12} cells. In brief, total RNA was isolated using RNeasy mini kit (Qiagen) according to the manufacturer's instructions and quantified using a Nanodrop Spectrophotometer 2000c (Thermo Fisher Scientific). A total amount of 3 μ g RNA per sample was used as input material for library construction. Sequencing libraries were generated using NEBNext UltraTM RNA Library Prep Kit for Illumina (NEB) following the manufacturer's instruction. Libraries were pooled in equimolar and sequenced using the paired-end strategy (2 \times 150) on the Illumina NovaSeq 6000 platform following the standard protocols (Novogene).

RNA-Seq data analysis

Three publicly available datasets (GSE139963 (9), GSE92592 (10), and GSE99621 (12)) were collected from Gene Expression Omnibus. GSE139963 was in GPL18573 platform, Illumina NextSeq 500 (*Homo sapiens*), which composed of human lung fibroblasts treated with PBS (control) or TGF- β in triplicates. GSE92592 was in GPL11154 platform, Illumina HiSeq 2000 (*H. sapiens*), which consisted of 20 IPF and 19 control lung samples. GSE99621 was in GPL16791 platform, Illumina HiSeq 2500 (*H. sapiens*), which included 26 samples from indicated sections (eight from healthy lungs, ten from IPF-affected lung tissues, and eight from IPF spared areas). Quality control of GSE163908, GSE139963, GSE92592, and GSE99621 data was performed using FastQC (<http://www.bioinformatics.babraham.ac.uk/projects/fastqc>) and MultiQC (48). Trim Galore (<https://github.com/FelixKrueger/TrimGalore>) was used to trim adapters, reads with low quality (<30), and short length (<50 bp). RNA-Seq reads were mapped to Human genome Ensembl GRCh38 using Hisat2 (49) (version 2.1.0) with default codes. Sam files were transformed into bam files using samtools (50) (version 1.9). The read counts of each gene were summarized using featureCounts (51) (version 1.6.5). Raw read counts were imported into RStudio (version 3.6.1) and analyzed by using R package of DESeq2 (52) (version 1.26.0). Transcripts with low abundance (under ten counts across all samples) were removed. Genes with FDR *p* value less than 0.05 adjusted by using Benjamini–Hochberg method were considered as DEGs.

Pathway enrichment analysis

GO enrichment analysis was generated through PANTHER (7) Web site. REVIGO TreeMap was generated *via* an online tool available at <http://revigo.irb.hr/> (53). Parameters were set

as FDR <0.05. GSVA (54) was used to calculate pathway activity.

Western blot analysis

Western blot analysis was performed with lysates from cells with urea buffer (8 M urea, 1 M thiourea, 0.5% CHAPS, 50 mM DTT, and 24 mM spermine). Primary antibodies were from Cell Signalling Technology (α -SMA; 14968; Phospho-Smad2, 3104; β -tubulin, 86298; phospho-EGFR, 2234; phospho-AKT, 9271; phospho-ERK, 9101; AKT, 9272; ERK, 9102; and EGFR, 4267), Santa Cruz (ZEB1, sc-25388; SPARC, sc-398419), and Millipore (tPA, 05-883). Signals were detected using an ECL detection system (GE Healthcare) or Odyssey imaging system (LI-COR) and evaluated by ImageJ 1.42q software (National Institutes of Health).

Quantitative RT-PCR

Real-time quantitative RT-PCR was performed using gene-specific primers (QuantiTect Primer Assays; Qiagen) for *ZEB1* (QT00008555), *PLAT* (tPA) (QT00075761), *CDH1* (E-cadherin) (QT00080143), or *ACTB* (β -actin) (QT01680476) with QuantiNova SYBR Green RT-PCR kits (Qiagen). Relative transcript levels of target genes were normalized to *ACTB* (β -actin).

Wound-healing migration assay

The wound-healing migration assays were done in serum-starved fibroblasts. Confluent monolayers of cells were wounded with a p20 pipette tip (time 0). Phase-contrast images were taken using an Olympus inverted microscope at time 0 h or 24 h after the scratch wound. Wound areas were evaluated by ImageJ 1.42q software.

Transwell migration assay

For the transwell migration assay, transwell membranes (8- μ m pore size, 6.5-mm diameter; Corning Costar; 3422) were used (45, 55, 56). The bottom chambers of the transwell were filled with indicated CM. The top chambers were seeded with 1.5×10^5 serum-starved fibroblasts per well. After 24 h, the filters were fixed with 4% paraformaldehyde for 10 min at room temperature; subsequently, the cells on the upper side of the membrane were scraped with a cotton swab. Filters were stained with crystal violet for light microscopy. Images were taken using an Olympus inverted microscope, and migratory cells were evaluated by ImageJ 1.42q software.

Quantitative proteomic analysis of the fibroblasts secretome and data processing

Proteomic experiment was performed in three biological replicates. Serum-free CM from MRC5 cells treated with or without TGF- β 1 (10 ng/ml; 48 h) were enriched based upon Strataclean resin (Agilent) and analyzed using LC–MSE (57), to provide estimates of absolute protein concentration with in-depth coverage. Raw data were analyzed and exported into a csv document. Normalization method for each data is first dividing by the sum of each sample, using proteins containing

no missing data, then multiplying by 10,000 (6). Minimum values of each column after normalization were used as pseudocounts to replace all the missing data, allowing for a complete statistical analysis (58). Differentially expressed proteins between two groups with $p < 0.05$ were identified as significant using a two-tailed and unpaired Student's *t* test (details described in supporting information section).

Statistical analysis and repeatability of experiments

Each experiment was repeated at least twice. Data are presented as mean and SD and compared with two-sample *t* test, Welch two-sample *t* test, Mann–Whitney *U* test, or one-way ANOVA test if appropriate. $p < 0.05$ was considered statistically significant. All data analyses and graphs were done in RStudio (version 3.6.1) or GraphPad Prism (version 8.2.1, GraphPad Software, Inc). Codes are available upon request.

Data availability

RNA-Seq data have been deposited in the Gene Expression Omnibus database (accession code: GSE163908). The mass spectrometry proteomics data have been deposited to the ProteomeXchange Consortium *via* the PRIDE repository (59) with the dataset identifier PXD025821.

Supporting information—This article contains [supporting information](#) (57).

Acknowledgments—This project was supported by the Medical Research Council (MR/S025480/1), an Academy of Medical Sciences/the Wellcome Trust Springboard Award (SBF002\1038), the Wessex Medical Trust, and AAIR Charity. Instrumentation in the Centre for Proteomic Research is supported by the Biotechnology and Biological Sciences Research Council (BM/M012387/1) and Wessex Medical Trust. We thank Carine Fixmer, Maria Lane, Benjamin Johnson, and the nurses of the Southampton Biomedical Research Unit for their help in the collection of human samples, supported by the Wessex Clinical Research Network and the National Institute of Health Research, UK.

Author contributions—D. E. D., M. G. J., and Y. W. conceptualization; L. Y., Y. Z., J. L., L. W., F. C., R. M. E., and P. S. methodology; L. Y., Y. Z., and J. L. formal analysis; L. Y., Y. Z., J. L., L. W., A. R., and F. M. I. investigation; F. C., A. A., B. G. M., S. V. F., D. H., T. W., J. D., L. R., P. S., and M. G. J. resources; L. Y., Y. Z., J. L., and Y. W. data curation; L. Y., Y. Z., D. E. D., M. G. J., and Y. W. writing—original draft; D. E. D., M. G. J., and Y. W. supervision; M. G. J. and Y. W. project administration; Y. W. funding acquisition.

Funding and additional information—L. Y. was supported by the China Scholarship Council. Y. Z. was supported by an Institute for Life Sciences PhD Studentship. F. C. was supported by the Medical Research Foundation (MRF-091-0003-RG-CONFO). J. D. was supported by the Francis Crick Institute, which receives its core funding from Cancer Research UK (FC001070), the UK Medical Research Council (FC001070), and the Wellcome Trust (FC001070).

Conflict of interest—The authors declare that they have no conflicts of interest with the contents of this article.

Epithelial–mesenchymal crosstalk in pulmonary fibrosis

Abbreviations—The abbreviations used are: ATII, alveolar epithelial type II; CM, conditioned media; DEG, differentially expressed gene; ECM, extracellular matrix; EGFR, epithelial growth factor receptor; EMT, epithelial–mesenchymal transition; ERK, extracellular-regulated kinase; FDR, false discovery rate; GO, Gene Ontology; GSEA, gene set variation analysis; IPF, idiopathic pulmonary fibrosis; IPFF, IPF fibroblast; NHLEF, normal human lung fibroblast; 4-OHT, 4-hydroxytamoxifen; α -SMA, α -smooth muscle actin; SPARC, secreted protein acidic and rich in cysteine; TGF- β , transforming growth factor- β ; tPA, tissue plasminogen activator; ZEB1, zinc finger E-box-binding homeobox 1.

References

1. Richeldi, L., Collard, H. R., and Jones, M. G. (2017) Idiopathic pulmonary fibrosis. *Lancet* **389**, 1941–1952
2. Putman, R. K., Hatabu, H., Araki, T., Gudmundsson, G., Gao, W., Nishino, M., Okajima, Y., Dupuis, J., Latourelle, J. C., Cho, M. H., El-Chemaly, S., Coxson, H. O., Celli, B. R., Fernandez, I. E., Zazueta, O. E., et al. (2016) Association between interstitial lung abnormalities and all-cause mortality. *JAMA* **315**, 672–681
3. Meltzer, E. B., and Noble, P. W. (2008) Idiopathic pulmonary fibrosis. *Orphanet J. rare Dis.* **3**, 8
4. Wynn, T. A. (2011) Integrating mechanisms of pulmonary fibrosis. *J. Exp. Med.* **208**, 1339–1350
5. Wynn, T. A. (2007) Common and unique mechanisms regulate fibrosis in various fibroproliferative diseases. *J. Clin. Invest.* **117**, 524–529
6. Yao, L., Conforti, F., Hill, C., Bell, J., Drawater, L., Li, J., Liu, D., Xiong, H., Alzetani, A., and Chee, S. J. (2019) Paracrine signalling during ZEB1-mediated epithelial–mesenchymal transition augments local myofibroblast differentiation in lung fibrosis. *Cell Death Differ.* **26**, 943–957
7. Mi, H., Muruganujan, A., Huang, X., Ebert, D., Mills, C., Guo, X., and Thomas, P. D. (2019) Protocol Update for large-scale genome and gene function analysis with the PANTHER classification system (v. 14.0). *Nat. Protoc.* **14**, 703–721
8. Ghatak, S., Bogatkevich, G. S., Atnelishvili, I., Akter, T., Feghali-Bostwick, C., Hoffman, S., Fresco, V. M., Fuchs, J. C., Visconti, R. P., Markwald, R. R., Padhye, S. B., Silver, R. M., Hascall, V. C., and Misra, S. (2014) Overexpression of c-Met and CD44v6 receptors contributes to autocrine TGF- β 1 signaling in interstitial lung disease. *J. Biol. Chem.* **289**, 7856–7872
9. Senavirathna, L. K., Huang, C., Pushparaj, S., Xu, D., and Liu, L. (2020) Hypoxia and transforming growth factor β 1 regulation of long non-coding RNA transcriptomes in human pulmonary fibroblasts. *Physiol. Rep.* **8**, e14343
10. Schafer, M. J., White, T. A., Iijima, K., Haak, A. J., Ligresti, G., Atkinson, E. J., Oberg, A. L., Birch, J., Salmonowicz, H., and Zhu, Y. (2017) Cellular senescence mediates fibrotic pulmonary disease. *Nat. Commun.* **8**, 1–11
11. Conforti, F., Ridley, R., Brereton, C., Alzetani, A., Johnson, B., Marshall, B. G., Fletcher, S. V., Ottensmeier, C. H., Richeldi, L., and Skipp, P. (2020) Paracrine SPARC signaling dysregulates alveolar epithelial barrier integrity and function in lung fibrosis. *Cell Death Discov.* **6**, 1–11
12. Luzina, I. G., Salcedo, M. V., Rojas-Peña, M. L., Wyman, A. E., Galvin, J. R., Sachdeva, A., Clerman, A., Kim, J., Franks, T. J., and Britt, E. J. (2018) Transcriptomic evidence of immune activation in macroscopically normal-appearing and scarred lung tissues in idiopathic pulmonary fibrosis. *Cell Immunol.* **325**, 1–13
13. Nici, L., Donner, C., Wouters, E., Zuwallack, R., Ambrosino, N., Bourbeau, J., Carone, M., Celli, B., Engelen, M., and Fahy, B. (2006) American thoracic society/European respiratory society statement on pulmonary rehabilitation. *Am. J. Respir. Crit. Care Med.* **173**, 1390–1413
14. Prunotto, M., Budd, D. C., Gabbiani, G., Meier, M., Formentini, I., Hartmann, G., Pomposiello, S., and Moll, S. (2012) Epithelial–mesenchymal crosstalk alteration in kidney fibrosis. *J. Pathol.* **228**, 131–147
15. Ramos, C., Montaña, M., García-Alvarez, J., Ruiz, V. C., Uhal, B. D., Selman, M., and Pardo, A. (2001) Fibroblasts from idiopathic pulmonary fibrosis and normal lungs differ in growth rate, apoptosis, and tissue inhibitor of metalloproteinases expression. *Am. J. Respir. Cel. Mol. Biol.* **24**, 591–598
16. Pierce, E. M., Carpenter, K., Jakubzick, C., Kunkel, S. L., Evanoff, H., Flaherty, K. R., Martinez, F. J., Toews, G. B., and Hogaboam, C. M. (2007) Idiopathic pulmonary fibrosis fibroblasts migrate and proliferate to CC chemokine ligand 21. *Eur. Respir. J.* **29**, 1082–1093
17. Suganuma, H., Sato, A., Tamura, R., and Chida, K. (1995) Enhanced migration of fibroblasts derived from lungs with fibrotic lesions. *Thorax* **50**, 984–989
18. Quax, P., Boxman, I., Van Kesteren, C., Verheijen, J., and Ponc, M. (1994) Plasminogen activators are involved in keratinocyte and fibroblast migration in wounded cultures *in vitro*. *Fibrinolysis* **8**, 221–228
19. Hu, K., Wu, C., Mars, W. M., and Liu, Y. (2007) Tissue-type plasminogen activator promotes murine myofibroblast activation through LDL receptor-related protein 1-mediated integrin signaling. *J. Clin. Invest.* **117**, 3821–3832
20. Hu, K., Lin, L., Tan, X., Yang, J., Bu, G., Mars, W. M., and Liu, Y. (2008) tPA protects renal interstitial fibroblasts and myofibroblasts from apoptosis. *J. Am. Soc. Nephrol.* **19**, 503–514
21. Hill, C., Jones, M. G., Davies, D. E., and Wang, Y. (2019) Epithelial–mesenchymal transition contributes to pulmonary fibrosis via aberrant epithelial/fibroblastic cross-talk. *J. Lung Health Dis.* **3**, 31–35
22. Sakai, N., and Tager, A. M. (2013) Fibrosis of two: Epithelial cell–fibroblast interactions in pulmonary fibrosis. *Biochim. Biophys. Acta* **1832**, 911–921
23. Brezniceanu, M.-L., Lau, C. J., Godin, N., Chénier, I., Duclos, A., Éthier, J., Filep, J. G., Ingelfinger, J. R., Zhang, S.-L., and Chan, J. S. (2010) Reactive oxygen species promote caspase-12 expression and tubular apoptosis in diabetic nephropathy. *J. Am. Soc. Nephrol.* **21**, 943–954
24. Kim, J., Seok, Y. M., Jung, K.-J., and Park, K. M. (2009) Reactive oxygen species/oxidative stress contributes to progression of kidney fibrosis following transient ischemic injury in mice. *Am. J. Physiol. Renal Physiol.* **297**, F461–F470
25. Kim, S. H., Yu, M.-A., Ryu, E. S., Jang, Y.-H., and Kang, D.-H. (2012) Indoxyl sulfate-induced epithelial-to-mesenchymal transition and apoptosis of renal tubular cells as novel mechanisms of progression of renal disease. *Lab. Invest.* **92**, 488–498
26. Bhaskaran, M., Reddy, K., Radhakrishnan, N., Franki, N., Ding, G., and Singhal, P. C. (2003) Angiotensin II induces apoptosis in renal proximal tubular cells. *Am. J. Physiol. Renal Physiol.* **284**, F955–F965
27. Demopoulos, K., Arvanitis, D., Vassilakis, D., Siafakas, N., and Spandidos, D. (2002) MYCL1, FHIT, SPARC, p16INK4 and TP53 genes associated to lung cancer in idiopathic pulmonary fibrosis. *J. Cell. Mol. Med.* **6**, 215–222
28. Camino, A. M., Atorrasagasti, C., Maccio, D., Prada, F., Salvatierra, E., Rizzo, M., Alaniz, L., Aquino, J. B., Podhajcer, O. L., and Silva, M. (2008) Adenovirus-mediated inhibition of SPARC attenuates liver fibrosis in rats. *J. Gene Med.* **10**, 993–1004
29. Frizell, E., Liu, S.-L., Abraham, A., Ozaki, I., Eghbali, M., Sage, E. H., and Zern, M. A. (1995) Expression of SPARC in normal and fibrotic livers. *Hepatology* **21**, 847–854
30. Hohenester, E., Maurer, P., and Timpl, R. (1997) Crystal structure of a pair of follistatin-like and EF-hand calcium-binding domains in BM-40. *EMBO J.* **16**, 3778–3786
31. Sasaki, T., Hohenester, E., Göhring, W., and Timpl, R. (1998) Crystal structure and mapping by site-directed mutagenesis of the collagen-binding epitope of an activated form of BM-40/SPARC/osteonectin. *EMBO J.* **17**, 1625–1634
32. Chang, W., Wei, K., Jacobs, S. S., Upadhyay, D., Weill, D., and Rosen, G. D. (2010) SPARC suppresses apoptosis of idiopathic pulmonary fibrosis fibroblasts through constitutive activation of β -catenin. *J. Biol. Chem.* **285**, 8196–8206
33. Said, N. A., Elmarakby, A. A., Imig, J. D., Fulton, D. J., and Motamed, K. (2008) SPARC ameliorates ovarian cancer-associated inflammation. *Neoplasia* **10**, 1092–1104
34. Alvarez, M. J., Prada, F., Salvatierra, E., Bravo, A. I., Lutzky, V. P., Carbone, C., Pitossi, F. J., Chuluyan, H. E., and Podhajcer, O. L. (2005)

- Secreted protein acidic and rich in cysteine produced by human melanoma cells modulates polymorphonuclear leukocyte recruitment and antitumor cytotoxic capacity. *Cancer Res.* **65**, 5123–5132
35. Liu, Y., Feng, Y., Wang, X., Yang, X., Hu, Y., Li, Y., Zhang, Q., Huang, Y., Shi, K., and Ran, C. (2020) SPARC negatively correlates with prognosis after transarterial chemoembolization and facilitates proliferation and metastasis of hepatocellular carcinoma via ERK/MMP signaling pathways. *Front. Oncol.* **10**, 813
 36. Wang, Q., Yang, Q., Zhang, A., Kang, Z., Wang, Y., and Zhang, Z. (2019) Silencing of SPARC represses heterotopic ossification via inhibition of the MAPK signaling pathway. *Biosci. Rep.* **39**
 37. Chang, C.-H., Yen, M.-C., Liao, S.-H., Hsu, Y.-L., Lai, C.-S., Chang, K.-P., and Hsu, Y.-L. (2017) Secreted protein acidic and rich in cysteine (SPARC) enhances cell proliferation, migration, and epithelial mesenchymal transition, and SPARC expression is associated with tumor grade in head and neck cancer. *Int. J. Mol. Sci.* **18**, 1556
 38. Iyer, A. K., Tran, K. T., Griffith, L., and Wells, A. (2008) Cell surface restriction of EGFR by a tenascin cytotactin-encoded EGF-like repeat is preferential for motility-related signaling. *J. Cell Physiol.* **214**, 504–512
 39. Swindle, C. S., Tran, K. T., Johnson, T. D., Banerjee, P., Mayes, A. M., Griffith, L., and Wells, A. (2001) Epidermal growth factor (EGF)-like repeats of human tenascin-C as ligands for EGF receptor. *J. Cell Biol.* **154**, 459–468
 40. Iyer, A. K., Tran, K. T., Borysenko, C. W., Cascio, M., Camacho, C. J., Blair, H. C., Bahar, I., and Wells, A. (2007) Tenascin cytotactin epidermal growth factor-like repeat binds epidermal growth factor receptor with low affinity. *J. Cell Physiol.* **211**, 748–758
 41. Grahovac, J., and Wells, A. (2014) Matrikine and matricellular regulators of EGF receptor signaling on cancer cell migration and invasion. *Lab. Invest.* **94**, 31–40
 42. Raghu, G., Remy-Jardin, M., Myers, J. L., Richeldi, L., Ryerson, C. J., Lederer, D. J., Behr, J., Cottin, V., Danoff, S. K., Morell, F., Flaherty, K. R., Wells, A., Martinez, F. J., Azuma, A., Bice, T. J., *et al.* (2018) Diagnosis of idiopathic pulmonary fibrosis. An official ATS/ERS/JRS/ALAT clinical practice guideline. *Am. J. Respir. Crit. Care Med.* **198**, e44–e68
 43. Conforti, F., Davies, E. R., Calderwood, C. J., Thatcher, T. H., Jones, M. G., Smart, D. E., Mahajan, S., Alzetani, A., Havelock, T., Maher, T. M., Molyneaux, P. L., Thorley, A. J., Tetley, T. D., Warner, J. A., Packham, G., *et al.* (2017) The histone deacetylase inhibitor, romidepsin, as a potential treatment for pulmonary fibrosis. *Oncotarget* **8**, 48737–48754
 44. Jones, M. G., Andriotis, O. G., Roberts, J. J., Lunn, K., Tear, V. J., Cao, L., Ask, K., Smart, D. E., Bonfanti, A., Johnson, P., Alzetani, A., Conforti, F., Doherty, R., Lai, C. Y., Johnson, B., *et al.* (2018) Nanoscale dysregulation of collagen structure-function disrupts mechano-homeostasis and mediates pulmonary fibrosis. *Elife* **7**
 45. Hill, C., Li, J., Liu, D., Conforti, F., Brereton, C. J., Yao, L., Zhou, Y., Alzetani, A., Chee, S. J., Marshall, B. G., Fletcher, S. V., Hancock, D., Ottensmeier, C. H., Steele, A. J., Downward, J., *et al.* (2019) Autophagy inhibition-mediated epithelial-mesenchymal transition augments local myofibroblast differentiation in pulmonary fibrosis. *Cell Death Dis.* **10**, 591
 46. Molina-Arcas, M., Hancock, D. C., Sheridan, C., Kumar, M. S., and Downward, J. (2013) Coordinate direct input of both KRAS and IGF1 receptor to activation of PI3 kinase in KRAS-mutant lung cancer. *Cancer Discov.* **3**, 548–563
 47. Coelho, M. A., de Carne Trecesson, S., Rana, S., Zecchin, D., Moore, C., Molina-Arcas, M., East, P., Spencer-Dene, B., Nye, E., Barnouin, K., Snijders, A. P., Lai, W. S., Blackshear, P. J., and Downward, J. (2017) Oncogenic RAS signaling promotes tumor immunoresistance by stabilizing PD-L1 mRNA. *Immunity* **47**, 1083–1099.e1086
 48. Ewels, P., Magnusson, M., Lundin, S., and Kaller, M. (2016) MultiQC: Summarize analysis results for multiple tools and samples in a single report. *Bioinformatics* **32**, 3047–3048
 49. Kim, D., Langmead, B., and Salzberg, S. L. (2015) Hisat: A fast spliced aligner with low memory requirements. *Nat. Methods* **12**, 357–360
 50. Li, H., Handsaker, B., Wysoker, A., Fennell, T., Ruan, J., Homer, N., Marth, G., Abecasis, G., Durbin, R., and Genome Project Data Processing, S. (2009) The sequence alignment/map format and SAMtools. *Bioinformatics* **25**, 2078–2079
 51. Liao, Y., Smyth, G. K., and Shi, W. (2014) featureCounts: an efficient general purpose program for assigning sequence reads to genomic features. *Bioinformatics* **30**, 923–930
 52. Love, M. I., Huber, W., and Anders, S. (2014) Moderated estimation of fold change and dispersion for RNA-seq data with DESeq2. *Genome Biol.* **15**, 550
 53. Supek, F., Bosnjak, M., Skunca, N., and Smuc, T. (2011) REVIGO summarizes and visualizes long lists of gene ontology terms. *PLoS One* **6**, e21800
 54. Hanzelmann, S., Castelo, R., and Guinney, J. (2013) Gsva: Gene set variation analysis for microarray and RNA-seq data. *BMC Bioinformatics* **14**, 7
 55. Wang, Y., Xiong, H., Liu, D., Hill, C., Ertay, A., Li, J., Zou, Y., Miller, P., White, E., Downward, J., Goldin, R. D., Yuan, X., and Lu, X. (2019) Autophagy inhibition specifically promotes epithelial-mesenchymal transition and invasion in RAS-mutated cancer cells. *Autophagy* **15**, 886–899
 56. Liu, D., Ertay, A., Hill, C., Zhou, Y., Li, J., Zou, Y., Qiu, H., Yuan, X., Ewing, R. M., Lu, X., Xiong, H., and Wang, Y. (2020) ASPP1 deficiency promotes epithelial-mesenchymal transition, invasion and metastasis in colorectal cancer. *Cell Death Dis.* **11**, 224
 57. Silva, J. C., Gorenstein, M. V., Li, G.-Z., Vissers, J. P., and Geromanos, S. J. (2006) Absolute quantification of proteins by LCMSE: A virtue of parallel MS acquisition. *Mol. Cell Proteomics* **5**, 144–156
 58. Wang, J., Li, L., Chen, T., Ma, J., Zhu, Y., Zhuang, J., and Chang, C. (2017) In-depth method assessments of differentially expressed protein detection for shotgun proteomics data with missing values. *Sci. Rep.* **7**, 1–8
 59. Perez-Riverol, Y., Csordas, A., Bai, J., Bernal-Llinares, M., Hewapathirana, S., Kundu, D. J., Inuganti, A., Griss, J., Mayer, G., Eisenacher, M., Perez, E., Uszkoreit, J., Pfeuffer, J., Sachsenberg, T., Yilmaz, S., *et al.* (2019) The PRIDE database and related tools and resources in 2019: Improving support for quantification data. *Nucleic Acids Res.* **47**, D442–D450