

Application of the floristic-vegetational indexes system for the evaluation of the environmental quality of a semi-natural area of the Po Valley (Piacenza, Italy).

L. Giupponi¹, C. Corti¹, P. Manfredi², C. Cassinari³

¹ *Istituto di Agronomia, Genetica e Coltivazioni erbacee, Università Cattolica del Sacro Cuore, via Emilia Parmense 84, I-29122 Piacenza, Italy.*

² *m.c.m. Ecosistemi s.r.l., località Faggiola s.n.c., I-29027 Gariga di Podenzano, Piacenza, Italy.*

³ *Istituto di Chimica Agraria ed Ambientale, Università Cattolica del Sacro Cuore, via Emilia Parmense 84, I-29122 Piacenza, Italy.*

Abstract

The floristic-vegetational indexes proposed by Taffetani & Rismondo (2009) and updated by Rismondo *et al.* (2011) were used to assess the environmental quality of a semi-natural area located on the outskirts of Piacenza (Emilia-Romagna, Italy), the site of a closed landfill of Municipal Solid Waste (MSW). This method was created and perfected to analyze the ecological functionality of agro-ecosystems and permits simple and rapid measurement of the ecological characteristics and grade of dynamic evolution of the phytocoenoses. These indexes were applied to the vegetation of the different sectors that make up the study area and from the results obtained it was possible to identify those with the worst environmental quality and to formulate some proposals for action aimed at improving them environmentally. In particular an interruption in the evolution of the landfill vegetation was found, due to the chemical-physical characteristics of the cover soil which is compact and of limited depth. The application of the Taffetani & Rismondo (2009) indexes to a real case has also allowed evaluation of their practicality and the information content obtained.

Key words: agro-ecosystems, floristic-vegetational indexes, landfill, maturity, phytosociology, Po valley, restoration.

Introduction

The floristic-vegetational indexes system proposed by Taffetani & Rismondo (2009) is a useful and practical tool for assessing the environmental quality of ecosystems modified by human activities (agro-ecosystems). It is based on the phytosociological study of vegetation, a modern scientific approach (Braun-Blanquet, 1964; Westhoff & Van der Maarel, 1978; Braun-Blanquet, 1979; Gehu & Rivaz-Martínez, 1981; Biondi, 1994; Biondi, 1996; Loidi, 2004; Biondi, 2011; Blasi & Frondoni, 2011; Blasi *et al.*, 2011; Pott, 2011) used worldwide and adopted by Directive 92/43/EEC, which is the most important European normative for conservation (Biondi, 2007; Biondi *et al.*, 2013). This system of bio-indicators measures the environmental quality of ecosystems on the basis of the characteristics of plant communities and therefore does not depend only on the information returned by individual species. The information content of each plant community is derived from the attribution of a numerical value for each syntaxonomic class and by assigning each species to a syntaxonomic class on the basis of its ecological characteristics. The application of this method permits the conversion of qualitative information related to vegetation into quantitative data able to summarise ecological information and allow easy evaluation and comparison of the quality of agro-ecosystems. The recent formulation and integration of these indexes (Ri-

smundo *et al.*, 2011), together with a lack of interest in the study of the ecology of agricultural and urbanized areas, has meant that they have been until now little used (Taffetani *et al.*, 2011a; Taffetani *et al.*, 2011b; Lancioni & Taffetani, 2012), although increasing emphasis on the protection of agro-ecosystems due to the recognition of the importance of interaction between natural and artificial systems (Baudry *et al.*, 2000; Brouwer *et al.*, 2001; Le Coeur *et al.*, 2002; Marshall & Moonen, 2002; Taffetani *et al.*, 2003; Hietala-Koivu *et al.*, 2004; Müller *et al.*, 2004; Roschewitz *et al.*, 2005; Jackson *et al.*, 2007; Moonen & Bàrberi, 2008; Pastor & Hernandez, 2009; Lomba *et al.*, 2013), could implement their use in future Landscape Ecology studies (Forman & Gordon, 1986; Forman, 1995; Blasi *et al.*, 2000; Ingegnoli, 2002; Blasi, 2007; Biondi *et al.*, 2011; Biondi *et al.*, 2012).

The present work is an integral part of the preliminary investigation of the characterization of a closed landfill involved in a restoration project co-funded by the European Union (LIFE+, LIFE 10 ENV/IT/0400 NewLife; <http://www.lifepplusecosistemi.eu>) and has as its aim the evaluation of the environmental quality of the landfill and its neighboring areas. In particular, using the Taffetani & Rismondo (2009) indexes, we aim to discover where and how it would be appropriate to intervene in order to implement ecological improvement of the area.

Corresponding author: Luca Giupponi. *Istituto di Agronomia, Genetica e Coltivazioni erbacee, Università Cattolica del Sacro Cuore, via Emilia Parmense 84, I-29122 Piacenza, Italy, e-mail: luca.giupponi@unicatt.it*

Materials and Methods

Study area

The study area is located in the administrative area of Piacenza (Emilia-Romagna, Italy), along the eastern bank of the River Trebbia (coordinates: 45°04'13" N, 9°39'33" E) and comprises the Borgotrebbe closed landfill of municipal solid waste and areas adjacent to it (Fig. 1). The area lies within the Site of Community Importance "Basso Trebbia" (SCI IT4010016) and is included in the area of the Trebbia River Park, where the potential vegetation consists of riparian woodland of *Populeta albae* Br.-Bl. 1935 (Ferrari, 1997; Piccoli, 1997; Puppi et al., 2010). The landfill was in use from 1972 to 1985, after which it was covered with a layer of soil, the chemical-physical characteristics of which are known (Tab. 1), and was freely colonized by wild plants. The soil of the landfill is of a loamy texture, neutral-alkaline pH, offering good availability of nutrients, and forms a thin layer of compact structure.

The study area lies in temperate continental bioclimatic zone (Rivaz-Martínez, 2004). Tab. 2 shows the climate data from the San Lazzaro Alberoni (Piacenza) weather station, which is located in the same area and environmental context as the study area; potential evapotranspiration (PE) was calculated according to Thornthwaite & Mather (1955, 1957). The average annual temperature is equal to 13.3 °C with a range of 22.4 °C, and annual precipitation amounts to 778.7 mm mainly concentrated in spring and autumn; there

is a water deficit during the warmer summer months ($P - PE < 0$ from May to August).

Sampling of vegetation and analysis of data

Twenty-one phytosociological relevés were conducted within the five different areas outlined in the vegetation transect in Fig. 2. In detail, three relevés were conducted in area A, five in area B, six in C, five in D and two in E. The relevés were conducted in accordance with the method of the Zurich-Montpellier Sigmatist School (Braun-Blanquet, 1964) and periodically monitored from April to September 2013. The indexes of cover-abundance were assigned using the scale modified by Pignatti (1982). The vegetation data, organized in a matrix (species x relevés), were statistically processed after conversion of the cover-abundance indexes into ordinal values (Taffetani & Rismondo, 2009). Cluster analysis was carried out (UPGAMA method; chordal distance coefficient) using Syn-tax 2000 software (Podani, 2001) in order to highlight the floristic-physiognomic similarities of the relevés.

To evaluate the quality and the environmental characteristics of the area, the following floristic-vegetational indexes (Taffetani & Rismondo, 2009; Rismondo et al., 2011) were used: index of maturity (IM), index of floristic biodiversity (IFB), indexes of the life forms (IT = index of the therophytic component, IH = index of the hemicryptophytic component, IF = index of the perennial non-hemicryptophyte component), phytogeographic indexes (IL = index of endemic component,

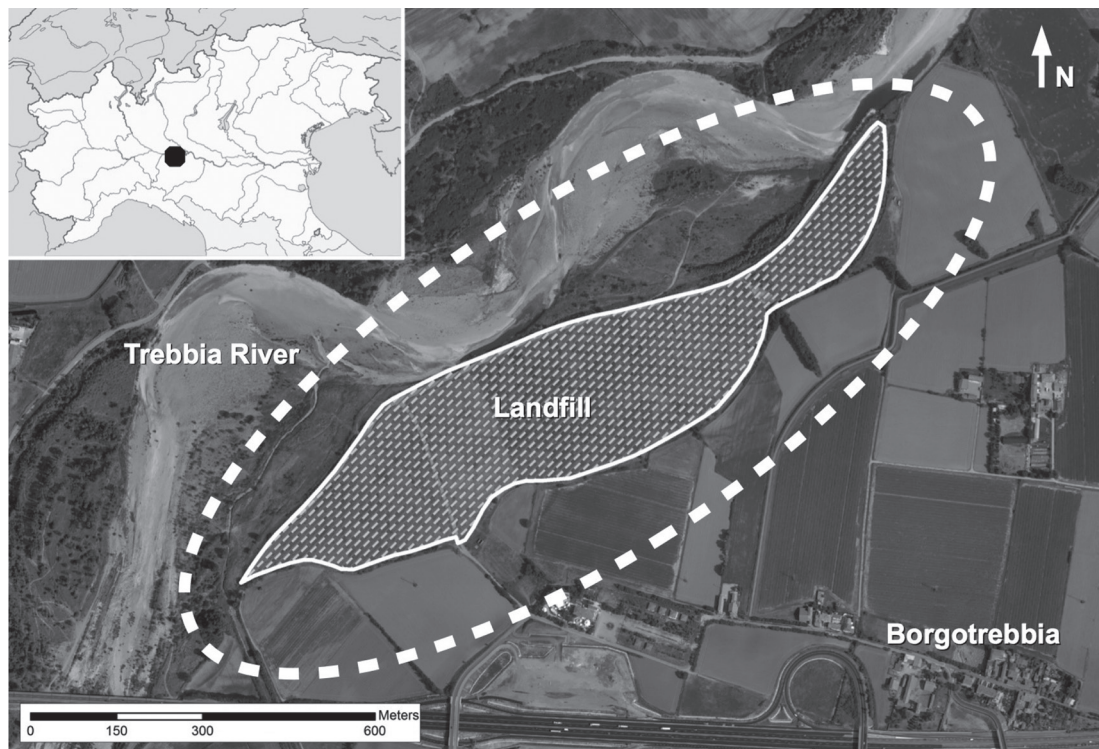


Fig. 1 - Study area. The broken line indicates the area where the phytosociological relevés were conducted.

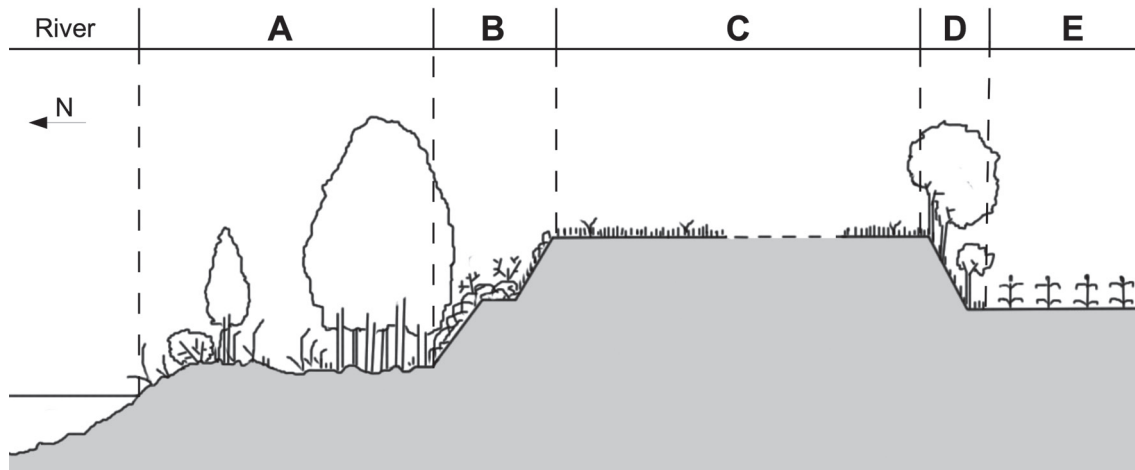


Fig. 2 - North-south vegetation transect of the study area. The letters indicate the different areas where phytosociological relevés were conducted: A = riverside area; B = northern edge of the landfill; C = landfill, D = southern edge of the landfill, E = cultivated fields.

ID = index of the components with a wide distribution, IE = index of the exotic component) and edaphic indexes (IX = index of xerophilia; IW = index of hygrophilia, IA = index of alophilia). The value of each index was calculated for the vegetation of each of the five areas of the transect. The data related to life form and chorological type were taken respectively from Pignatti (1982) and Romani & Alessandrini (2001), while for the attribution of phytosociological class to each species various manuals in the literature (Oberdorfer, 1992; Mucina *et al.*, 1993; Rivas-Martínez *et al.*, 2002; Ubaldi, 2008; Ubaldi, 2008a; Landolt *et al.*, 2010) were consulted. The taxonomic nomenclature follows Conti *et al.*, 2005 and later amendments (Conti *et al.*, 2007) while the syntaxonomic nomenclature is in accordance with Rivas-Martínez *et al.* (2002).

Results

In the study area 141 species were observed, some of which are infrequent in the province of Piacenza,

Tab. 1 - Physical-chemical properties of four samples of landfill cover soil. Data source: m.c.m. Ecosistemi s.r.l., 2012.

Soil sample	1	2	3	4
Depth (cm)	45	47	55	30
Sand (%)	33,3	25,0	21,9	11,5
Silt (%)	54,2	62,7	65,8	73,8
Clay (%)	12,5	12,3	12,3	14,7
pH	8,4	8,0	7,9	8,0
C tot. (g/Kg)	38,3	37,8	33,6	22,8
C org. (g/Kg)	19,2	23,5	19,4	16,7
N tot. (g/Kg)	1,7	2,6	2,3	2,1
CSC (meq/100ml)	22,6	32,2	17,0	20,9

e.g. *Hordeum marinum* subsp. *marinum*, *Alopecurus rendlei*, *Vulpia myuros* and *Onopordum acanthium* subsp. *acanthium* (Romani & Alessandrini, 2001; Banfi *et al.*, 2005; Bracchi & Romani, 2010; Giupponi *et al.*, 2013a). Fig. 3 shows the dendrogram returned by cluster analysis. From the graph it can be observed that the relevés are separated into four groups, three of which (clusters 1, 2 and 4) coincide with the areas A, B and E of the transect, while cluster 3 combines the relevés of areas C and D which have similar floristic-physiognomic features. Table 3 shows the species grouped in the different phytosociological classes and relevés ranked according to the area in which they were performed. Species attributed to each class are characteristic/differential of such class or characteristic/differential of syntaxa included in such class. *Hordeum marinum* subsp. *marinum* is included in the *Saginetea maritimae* class in accordance with Brullo & Giusso del Galdo (2003), while *Prunus cerasifera* var. *pissardii* is included in the class *Rhamno-Prunetea* as it is a spontaneous ornamental species that grows along rivers and in disturbed areas of Piacenza (Romani & Alessandrini, 2001; Bracchi & Romani, 2010).

Area A has vegetation characterized in the tree and shrub layer by species of *Salici purpureae-Populetea nigrae*, while in the herbaceous layer there are several hygrophilic species from the *Galio-Urticetea* and *Bidentetea tripartitae* classes. The vegetation of the northern edge of the landfill (area B) has some similarities with area A, the same tree species being present although with reduced cover-abundance values, but differs as regards the herbaceous layer which is characterized by a group of *Molinio-Arrhenatheretea* species and *Sambucus ebulus* which is present exclusively in this sector of the study area. The landfill (area C) has a high number of annual nitrophilous-ruderal species of *Stellarietea mediae* with some of *Artemisietea vulga-*

Tab. 2 - Temperature (T), precipitation (P) and potential evapotranspiration (PE), monthly averages. Data source: San Lazzaro Alberoni (PC) weather station, 1961-2005.

Month	G	F	M	A	M	J	J	A	S	O	N	D
T (°C)	2,2	4,0	9,0	12,5	18,0	21,8	24,1	24,6	19,2	13,7	7,5	3,2
P (mm)	35,7	19,7	39,3	76,0	66,0	65,0	41,4	51,9	102,0	131,0	98,4	52,3
PE (mm)	3,0	7,1	29,1	51,3	98,0	131,6	153,6	146,9	88,3	48,9	17,6	5,0
P-PE (mm)	32,7	12,6	10,2	24,7	-32,0	-66,6	-112,2	-95,0	13,7	82,1	80,8	47,3

ris (*Elymus repens* and *Convolvulus arvensis*). *Robinia pseudoacacia* characterizes the vegetation of area D, which in the herbaceous layer has various species of *Artemisieta vulgaris* including *Elymus repens*. To conclude, area E comprises fields of corn (*Zea mays*) in which there are some typical weeds including *Sorghum halepense*.

The graph of Fig. 4 presents the values returned by calculations of the maturity index (IM) and the index of floristic biodiversity (IFB) for the vegetation of each area of the transect. The riverside vegetation (area A) has the highest absolute value of both IM and IFB. The vegetation on the two edges of the landfill (areas B and D) have similar IM values, but that of the northern edge (area B) includes a considerably greater number of species many of which indicate wetland. The lowest values of IM and IFB are found for the cultivated field (area E) while the landfill vegetation, although it includes a good number of species, has low IM compared even to the vegetation at the edges.

Fig. 5 shows the results of the life form indexes (IT, IH, IF). Area A has the highest overall cover of perennial non-hemicryptophyte species (IF) and the lowest value of therophytes (IT). The southern edge (area D), compared with the northern edge (area B), has a greater perennial species cover (particularly of non-hemicryptophytes) and therefore a lower percentage of therophytes. In area C (landfill) there is a high proportion of therophytes although the highest absolute IT value is that for the corn field.

Analysis of the phytogeographical indexes chart (Fig. 6) reveals that there are no endemic species and

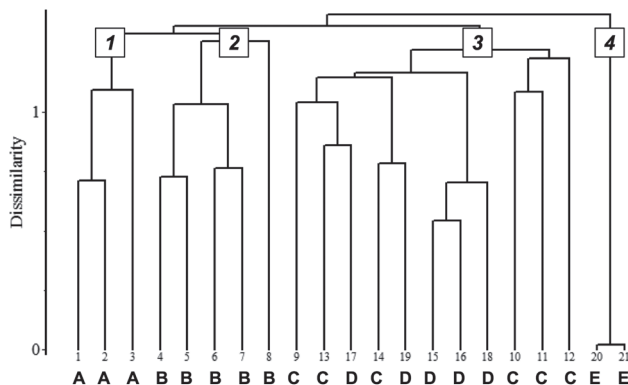


Fig. 3 - Dendrogram of relevés. The numbers in the boxes indicate the clusters while the letters indicate the transect areas where the relevés were performed.

that there is a widespread presence of exotic species, especially in the E area (high cover of *Zea mays*). Area C (landfill) is the only one in which the value of ID exceeds that of IE.

Fig. 7 shows the graph of the edaphic indexes (IX, IW, IA). In the study area there are no species of the xerophile community, while there is only one species belonging to the halophilic community (*Hordeum marinum* subsp. *marinum*) in area C. The values of the hygrophilic index (IW) gradually decrease as the distance of the sampling areas from the river increases.

Discussion

Application of floristic-vegetational index system has permitted identification of the main ecological and functional features that characterize the study area, as well as testing of their validity. Evidence supporting the validity of the indexes can be derived from comparison of the values returned by the vegetation of the area less disturbed by human activities (area A) with those related to the cultivated field (area E). As expected, the vegetation in area A was found to have the highest maturity value (IM = 6) and lowest therophytic component (IT = 14,42%) while vegetation in E was found to be disturbed (consisting almost entirely of therophytes) and little evolved, being constantly subject to different kinds of agronomic intervention (sowing, harvesting, fertilization, weed control, etc.). From a comparison of the indexes relating to the landfill edges (areas B and D) it is shown that, IFB being equal, the vegetation of area B presents a high value of IM due to the presence of species of community *Salici purpureae-Populetea nigrae*, which go up the slope being closed to the area A. This last observation can explain also the high value of index of hygrophilia (IW) of area B as compared with the value of IW in the area D. Considering the long period of time after the closure of the landfill, we would have expected a value of IM much higher in areas B, C and D; this may be due to maintenance interventions (for example the grass mowing) probably realized in the past and to the sheeps, that sometimes stop in this area before grazing in the mountains. Moreover, considering the plate surface of the landfill which should have guaranteed a better conservation of the water and soil, the value of IM should have been higher in area C rather than in areas B and D (steep areas). The graphic in Fig.

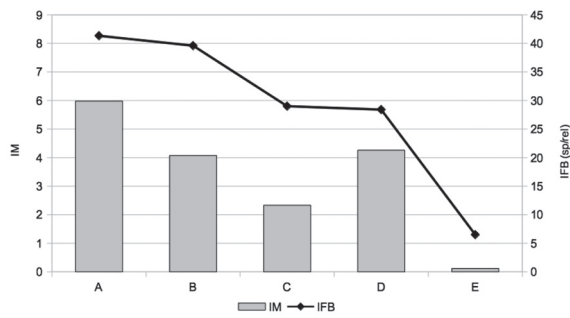


Fig. 4 - Graph of IM and IFB indexes. The letters refer to the transect areas.

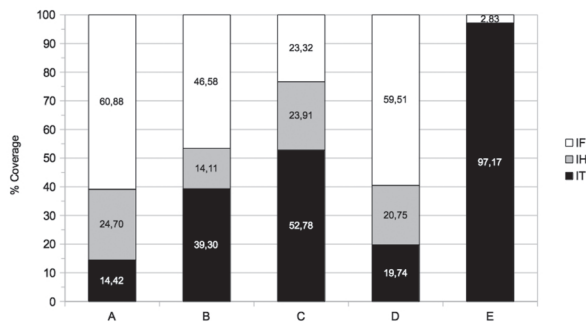


Fig. 5 - Histogram of IT, IH and IF indexes. The letters refer to the transect areas.

5 shows why there is a great difference between the results obtained and the results expected; although the area C has a level of biodiversity comparable with that one in area D, the percentage of therophytes is much higher in area C (IT =52,78%).

On the basis of the results obtained, it seems clear that to improve the environmental quality of the entire area, action should first be taken on the areas found to be qualitatively worse, i.e. the landfill (area C) and the corn field (area E). Given that area E is private and farmed for production purposes and is not involved in restoration projects, we shall not dwell on giving guidance on how to intervene in order to improve its environmental quality. The analyses conducted on this area serve mainly to achieve an idea of the values the indexes can reach in intensively-cultivated areas. With reference to the landfill, the analysis shows that its vegetation is constituted only by herbaceous species with a wide geographical distribution, mainly therophytes of *Stellarietea mediae* class as found by Giupponi *et al.* (2013). This characteristic is the one which has most affected the result returned by the index of maturity which for this vegetation has a particularly low value. Indeed, it is just above 2, the threshold that separates cultivated/disturbed areas (IM < 2) from unproductive areas with semi-natural or natural vegetation (IM > 2) (Taffetani & Rismondo, 2009; Rismondo *et al.*, 2011). Given that IM provides the measurement of the current stage of maturity of a plant community and that area

C has been left undisturbed for many years, we can deduce that there is a block in the vegetation dynamic, presumably due to the chemical-physical properties of the soil used for landfill cover. In particular, its shallow depth (average 45 cm) and compact structure would make it unsuitable for the rooting of plants with deep roots such as those of trees and shrubs. These properties also influence the water balance of the soil; indeed, as demonstrated by Giupponi *et al.* (2013a), this area suffers an edaphic water deficit occurring in correspondence with the less rainy summer months (May to September). The block in the vegetation dynamic can be due also to the gas emission caused by chemical-physical transformations of waste material. The different gasses of the landfill (in particular methane and carbon dioxide) (Huber-Humer *et al.*, 2011) produced by the decomposing micro-organisms can be harmful for the plants, because some of them seem to be toxic for the roots and some others would be able to change the chemical features of the soil (Geisler, 1963; Leone *et al.*, 1977, 1979, 1980; Flower *et al.*, 1981; Holmes, 1991; Reichenauer *et al.*, 2011; Xiaoli *et al.*, 2011). In general the gas emissions of the landfills are most produced during the first ten years of the storage of the waste, then they tend to stop completely; in some cases gas emission was observed also over fifty years after the waste disposal (Rovers *et al.*, 1977). In order to evaluate if the a.m. hypothesis could be of interest to

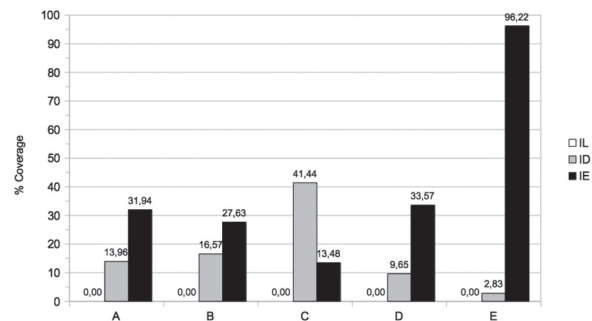


Fig. 6 - Histogram of IL, ID and IE indexes. The letters refer to the transect areas.

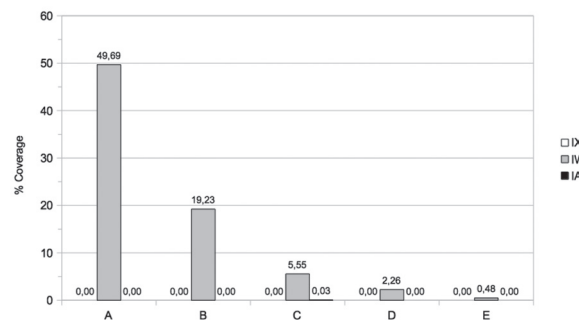


Fig. 7 - Histogram of IX, IW and IA indexes. The letters refer to the transect areas.

tional alofite. Indeed the presence of species such as *Bolboschoenus maritimus*, *Eleocharis palustris* and in particular *Persicaria lapathifolia* suggests in this case a wet micro-environment (hollows in which the water ceases to flow in particular during the rainy season) rather than a salty soil.

To ensure correct environmental restoration of this area it would be appropriate to initiate pedologic, agronomic or naturalistic actions which can improve the physical-chemical characteristics of the soil. It would also be appropriate to add further good soil to the landfill in order to increase the depth (at least one meter) in order to guarantee the minimum requirements which would permit normal root development and the stability of the most common trees and shrubs of temperate zone (Gilman, 1990; Canadell *et al.*, 1996; Schenk & Jackson, 2002; Crow, 2005; Landolt *et al.*, 2010). To facilitate development of vegetation some planting of native species, appropriate to the type of environment, would be advisable taking into account the concept of dynamic of vegetation and so the vegetation series of the study area (Ferrari, 1997; Puppi *et al.*, 2010). It would also be appropriate to implement a plan for the eradication of alien species present in the whole area, as these could inhibit the dynamic evolution of vegetation and change the ecology and function of ecosystems. Indeed, the vegetation of area A (natural riparian wood) contains several exotic species common in the province of Piacenza and in Italy in general (*Amorpha fruticosa*, *Humulus japonicus*, *Ambrosia artemisiifolia*, *Helianthus tuberosus* and *Phytolacca americana*) (Romani & Alessandrini, 2001; Celesti-Grapow *et al.*, 2009; Bracchi & Romani, 2010) and, although it proved to be that with the best ecological characteristics, it has an IM value which is well below that expected of fully-mature woodland. If chemical analyses certified the presence of gas emission from the landfill, it would be appropriate to intervene isolating the surface of the landfill and creating a system of gas outflow.

All the ideas of intervention proposed, together with many others, could contribute to environmental improvement of the area, though to quantify the real improvement, the indexes should be checked on completion of the interventions or applied to models that are able to predict post-intervention vegetation. To conclude, the floristic-vegetational indexes system proposed by Taffetani & Rismondo (2009) has proved to be particularly useful and effective for the purposes of this work and, for this reason, we wish to advise its use for the analysis and monitoring of the environmental characteristics of areas disturbed by human activities in future studies on conservation or environmental restoration.

References

- Banfi E., Bracchi G., Galasso G. & Romani E., 2005. Agrostologia Placentina. Memorie della Società Italiana di Scienze Naturali e del Museo Civico di Storia Naturale di Milano XXXIII (II): 1-80.
- Baudry J., Bunce R. G. H. & Burel F., 2000. Hedgerows: An international perspective on their origin, function and management. *Journal of Environmental Management* 60: 7-22.
- Biondi E., 1994. The phytosociological approach to landscape study. *Ann. Bot. (Roma)* 52: 135-141.
- Biondi E., 1996. L'analisi fitosociologica nello studio integrato del paesaggio. In "Avances en Fitosociologia": 13-22, Servicio Edit. Universidad del Pais Vasco, Bilbao.
- Biondi E. (Ed.), 2007. L'applicazione della Direttiva Habitat in Italia ed in Europa. Atti del 43° Congresso della Società Italiana di Scienza della Vegetazione. *Fitosociologia* 44 suppl. 1: 374.
- Biondi E., 2011. Phytosociology today: Methodological and conceptual evolution. *Plant Biosystems* 145 suppl. 1: 19-29.
- Biondi E., Casavecchia S. & Pesaresi S., 2011. Phytosociological synrelevés and plant landscape mapping: From theory to practice. *Plant Biosystems* 145 (2): 261-273.
- Biondi E., Casavecchia S., Pesaresi S. & Zivkovic L., 2012. Natura 2000 and the Pan-European Ecological Network: a new methodology for data integration. *Biodivers. Conserv.* 21(7):1741-1754.
- Biondi E., 2013. The "Italian Interpretation Manual of the 92/43/EEC Directive Habitats" and the prospects for phytosociology in the field of environmental sustainability. *Archivio Geobotanico* 14 (1-2):1-16
- Blasi C., 2007. Biodiversity and Landscape. In Blasi C., Boitani L., La Posta S., Manes F., Marchetti M. (Eds.), *Biodiversity in Italy*: 97-104. Ministry for the Environment Land and Sea Protection, Naturw Protection Directorate, Palombi editori.
- Blasi C., Biondi E. & Izco J., 2011. 100 years of plant sociology: A celebration. *Plant Biosystems* 145 suppl. 1: 1-3.
- Blasi C., Carranza M. L., Ercole S., Frondoni R. & Rosari L., 2000. Ecosystem classification and mapping: A proposal for Italian landscape. *Appl. Veg. Sci.* 3: 233-242.
- Blasi C. & Frondoni R., 2011. Modern prospective for plant sociology: The case of ecological land classification and the ecoregions of Italy. *Plant Biosystems* 145 suppl. 1: 30-37.
- Bracchi G. & Romani E., 2010. Checklist aggiornata e commentata della flora della Provincia di Piacenza. Museo Civico di Storia Naturale di Piacenza, Piacenza.
- Braun-Blanquet J., (1932) 1964. *Pflanzensoziologie*, 3° ed. 1-865. Springer-Ver., Wien.
- Braun-Blanquet J., 1979. *Fitosociologia*. Bases para el

- estudio de las comunidades vegetales. Ed. Madrid, Blume.
- Brouwer F. M., Baldock D. & La Chapelle C. (Eds.), 2001. The relation between agriculture and nature management. High level conference on EU enlargement, Wassenaar, 22-24 January 2001.
- Brullo S. & Giusso del Galdo G., 2003. La classe *Saginentea maritima* in Italia. *Fitosociologia* 40 (2): 29-41.
- Canadell J., Jackson R. B., Ehleringer J. R., Mooney H. A., Sala O. E. & Schulze E. D., 1996. Maximum rooting depth of vegetation types at the global scale. *Oecologia* 108: 583-595.
- Celesti-Grapow L., Pretto F., Brundu G., Carli E. & Blasi C. (Eds.), 2009. Contributo tematico alla Strategia Nazionale per la Biodiversità, Le invasioni di specie vegetali in Italia. Palombi & Partner, Roma.
- Conti F., Abbate G., Alessandrini A. & Blasi C. (Eds.), 2005. An Annotated Checklist of Italian Flora. Palombi & Partner, Roma.
- Conti F., Alessandrini A., Bacchetta G., Banfi E., Barberis G., Bartolucci F., Bernardo L., Bouvet D., Bovio M., Del Guacchio E., Frattini S., Galasso G., Gallo L., Gangale C., Gottschlich G., Grünanger P., Gubellini L., Iiriti G., Lucarini D., Marchetti D., Moraldo B., Peruzzi L., Poldini L., Prosser F., Raffaelli M., Santangelo A., Scassellati E., Scortegagna S., Selvi F., Soldano A., Tinti D., Ubaldi D., Uzunov D. & Vidali M., 2007 - Integrazione della checklist della flora vascolare italiana. *Natura Vicentina* 10 (2006): 5-74.
- Crow P., 2005. The influence of soil and species on tree root depth. Information Note. Edinburgh Forestry Commission 78: 1-8.
- Ferrari C., 1997. Le fasce di vegetazione dell'Emilia Romagna. In Tomaselli M. (Ed.), Guida alla vegetazione dell'Emilia Romagna: 25-41. Collana Annali Facoltà di Scienze Matematiche Fisiche e Naturali dell'Università di Parma, Parma.
- Flower F. B., Gilman E. F. & Leone I. A., 1981. Landfill gas, what it does to trees and how its injurious effects may be prevented. *Journal of Arboriculture* 7 (2):43-52.
- Forman R. T. T., 1995. Land mosaic. Cambridge University Press, Cambridge.
- Forman R. T. T. & Gordon M., 1986. Landscape Ecology. J. Wiley & Sons, New York.
- Géhu J. M. & Rivaz-Martínez S., 1981. Notions fondamentales de phytosociologie. *Ber. Intern. Symposium. Syntaxonomie in Rinteln* (1-33).
- Geisler T., 1963. The Influence of CO₂ and HCO₂ on Roots. *Plant Physiol.* 38: 77.
- Gilman E. F., 1990. Tree root growth and development. I. Form, spread, depth, and periodicity. *Journal of Environmental Horticulture* 8 (4): 215-220.
- Giupponi L., Corti C. & Manfredi P., 2013. La vegetazione di un'area degradata della Pianura Padana. In Pedrotti F. & Gerola P. (Eds.), Riassunti 108° Congresso Società Botanica Italiana, Baselga di Pinè (TN) 18-20 Settembre 2013: 190. TEMI, Trento.
- Giupponi L., Corti C. & Manfredi P., 2013a. *Onopordum acanthium* L. subsp. *acanthium* in una ex-discarica della Pianura Padana (Piacenza, Italy). *Informatore Botanico Italiano* 45 (2): 213-219.
- Hietala-Koivu R., Järvenpää T. & Helenius J., 2004. Value of semi-natural areas as biodiversity indicators in agricultural landscape. *Agriculture, Ecosystems and Environment* 101 (1): 9-19.
- Holmes J., 1991. Practical Landfill Restoration and Aftercare of Landfill Sites. Proceedings of a NAWDC Training Course, Welwyn, April 1991.
- Huber-Humer M., Kjeldsen P. & Spokas K. A. (Eds.), 2011. Special issue on landfill gas emission and mitigation. *Waste Management* 31 (5): 821-1082.
- Ingegnoli V., 2002. Landscape Ecology: A Widening Foundation. Springer-Verlag, Berlin, Heidelberg, New York.
- Jackson L. E., Pascual U. & Hodgkin T., 2007. Utilizing and conserving agrobiodiversity in agricultural landscapes. *Agriculture, Ecosystems and Environment* 121: 196-2010.
- Lancioni A. & Taffetani F., 2012. Vegetation of mowed and trampled habitats of a rural hilly area (Marche Region - central Italy). *Plant Sociology* 49 (1): 55-80.
- Landolt E., Bäumler B., Erhardt A., Hegg O., Klötzli F., Lämmle R.W., Nobis M., Rudmann-Mayree K., Schweingruber H.F., Theurillat J.P., Urmi E., Vust M. & Wohlgenuth T., 2010. Flora indicativa. Ökologische Zeigerwerte und biologische Kennzeichen zur Flora der Schweiz und der Alpen (Ecological indicator values and biological attributes of the Flora of Switzerland and the Alps). Haupt Verlag, Bern-Stuttgart-Wien.
- Le Coeur D., Baudry J., Burel F. & Thenail C., 2002. Why and how we should study field boundary biodiversity in an agrarian landscape context. *Agriculture, Ecosystems and Environment* 89 (2002): 23-40.
- Leone I. A., Flower F. B., Arthur J. J. & Gilman E. F., 1977. Damage to New Jersey Cropsby Landfill Gases. *Pl. Dis. Reporter.* 61: 295-299.
- Leone I. A., Flower F. B., Gilman E. F. & Arthur T. J., 1979. Adapting Woody Species and Planting Techniques to Landfill Conditions. EPA-600/2-79-128.
- Leone I. A., Gilman E. F., Telson M. F. & Flower F. B., 1980. Selection of trees and planting techniques for former refuse landfills. *Metro Tree Impr. Alliance (METRIA), Proc.* 3: 107-117.
- Loidi J., 2004. Phytosociology and Biodiversity: an undissociable relationship. *Fitosociologia* 41(1) suppl. 1: 3-13.
- Lomba A., Gonçalves J., Moreira F. & Honrado J.,

2013. Simulating long-term effects of abandonment on plant diversity in Mediterranean mountain farmland. *Plant Biosystems* 147(2): 328-342.
- Marshall E. J. P. & Moonen A. C., 2002. Field margins in northern Europe: their functions and interactions with agriculture. *Agriculture, Ecosystems and Environment* 89: 5-21.
- Moonen A. C. & Bàrberi P., 2008. Functional biodiversity: An agroecosystem approach. *Agriculture, Ecosystems and Environment* 127: 7-21.
- Mucina L., Grabherr G., Ellmauer T. & Wallnöfer S. (Eds.), 1993. *Die Pflanzengesellschaften Österreichs. Teil I, II, III.* Gustav Fischer Verlag, Jena.
- Müller C., Berger G. & Glemnitz M., 2004. Quantifying geomorphological heterogeneity to assess species diversity of set-aside arable land. *Agriculture, Ecosystems and Environment* 104: 587-594.
- Oberdorfer E., 1992. *Süddeutsche Pflanzengesellschaften. Teil I, II, III, IV.* Gustav Fischer Verlag, Stuttgart, New York.
- Pastor J. & Hernandez A. J., 2009. Multi-functional role of grassland systems in the ecological restoration of mines, landfill, roadside slopes and agroecosystems. *Options Méditerranéennes Series A* 79: 103-107.
- Piccoli F., 1997. La vegetazione della bassa Pianura Padana. In Tomaselli M. (Ed.), *Guida alla vegetazione dell'Emilia Romagna*: 43-57. Collana Annali Facoltà di Scienze Matematiche Fisiche e Naturali dell'Università di Parma, Parma.
- Pignatti S., 1982. *Flora d'Italia. 3 voll.* Edagricole, Bologna.
- Pignatti S., 2005. Valori di bioindicazione delle piante vascolari della Flora d'Italia (Bioindicators values of vascular plants of the Flora of Italy). *Braun-Blanquetia* 39: 3-97.
- Pott R., 2011. Phytosociology: A modern geobotanical method. *Plant Biosystems* 145 suppl. 1: 19-29.
- Podani J., 2001. *Syn-tax 2000.* Computer program for data analysis in ecology and systematics - User's Manual. Scientia Publishing, Budapest.
- Puppi G., Speranza M., Ubaldi D. & Zanotti A.L., 2010 - Le serie di vegetazione della regione Emilia-Romagna. In Blasi C. (Ed.), *La vegetazione d'Italia*: 181-203. Palombi & Partner, Roma.
- Reichenauer T. G., Watzinger A., Riesing J. & Gerzabek M. H., 2011. Impact of different plants on the gas profile of a landfill cover. *Waste Management* 31 (5): 843-853.
- Rismondo M., Lancioni A. & Taffetani F., 2011. Integrated tools and methods for the analysis of agroecosystem's functionality through vegetational investigations. *Fitosociologia* 4 (1): 41-52.
- Rivas-Martínez S., 2004. *Global Bioclimatics. Clasificación Bioclimática de la Tierra [Bioclimatic classification of the world]*. Available from: <http://www.globalbioclimatics.org>.
- Rivas-Martínez S., Diaz T. E., Fernández-González F., Izco J., Loidi J., Lousa M. & Penas A., 2002. Vascular plant communities of Spain and Portugal. *Itinera Geobotanica* 15 (2): 433-922.
- Romani E. & Alessandrini A., 2001. *Flora Piacentina.* Museo Civico di Storia Naturale di Piacenza, Società Piacentina di Scienze Naturali, Piacenza.
- Roschewitz I., Thies C. & Tschardtke., 2005. Are landscape complexity and farm specialisation related to land-use intensity of annual crop fields? *Agriculture, Ecosystems and Environment* 105: 87-99.
- Rovers F. A., Trembley J. J., Mooij H., 1977. *Procedures for Landfill Gas Monitoring and Control.* Environmental Protection Service, Fisheries and Environment, Ottawa, Ontario Canada.
- Schenk H. J. & Jackson B. R., 2002. Rooting depth, lateral root spreads and below-ground/above-ground allometries of plants in water-limited ecosystems. *Journal of Ecology* 90: 480-494.
- Taffetani F. & Rismondo M., 2009. Bioindicators system for the evaluation of the environment quality of agro-ecosystems. *Fitosociologia* 46 (2): 3-22.
- Taffetani F., Giorgini A. & Riolo P., 2003. Role and the ecology of the bands of spontaneous vegetation in the agroecosystems-Landscape Management for Functional Biodiversity. *IOBC wprs Bulletin* 26(4): 161-166.
- Taffetani F., Rismondo M. & Lancioni A., 2011a. Updating, results and potential applications of the indexes system for the evaluation of agro-ecosystem's functionality. In proceedings of: Abstracts Book of First International Symposium of the FIP: Global Strategy for Plant Conservation.
- Taffetani F., Rismondo M. & Lancioni A., 2011b. Environmental Evaluation and Monitoring of Agro-Ecosystems Biodiversity. In Oscar Grillo & Gianfranco Venora (Ed.), *Ecosystems Biodiversity*: 333-370. InTech.
- Thornthwaite C. W. & Mather J. R., 1955. The water balance. *Publ. in Climatology* 8: 1-104.
- Thornthwaite C. W. & Mather J. R., 1957. Instructions and tables for computing potential evapotranspiration and the water balance. *Publ. in Climatology* 10: 181-311.
- Ubaldi D., 2008. *Le vegetazioni erbacee e gli arbusteti italiani, tipologie fitosociologiche ed ecologia.* Aracne editrice, Roma.
- Ubaldi D., 2008a. *La vegetazione boschiva d'Italia: Manuale di Fitosociologia Forestale (2° ed.)*. Clueb, Bologna.
- Xiaoli C., Xin Z., Ziyang L., Shimaoka T., Nakayama H., Xiayan C. & Youcai Z., 2011. Characteristics of vegetation and its relationship with landfill gas in closed landfill. *Biomass & Bioenergy* 35(3): 1295-1301.